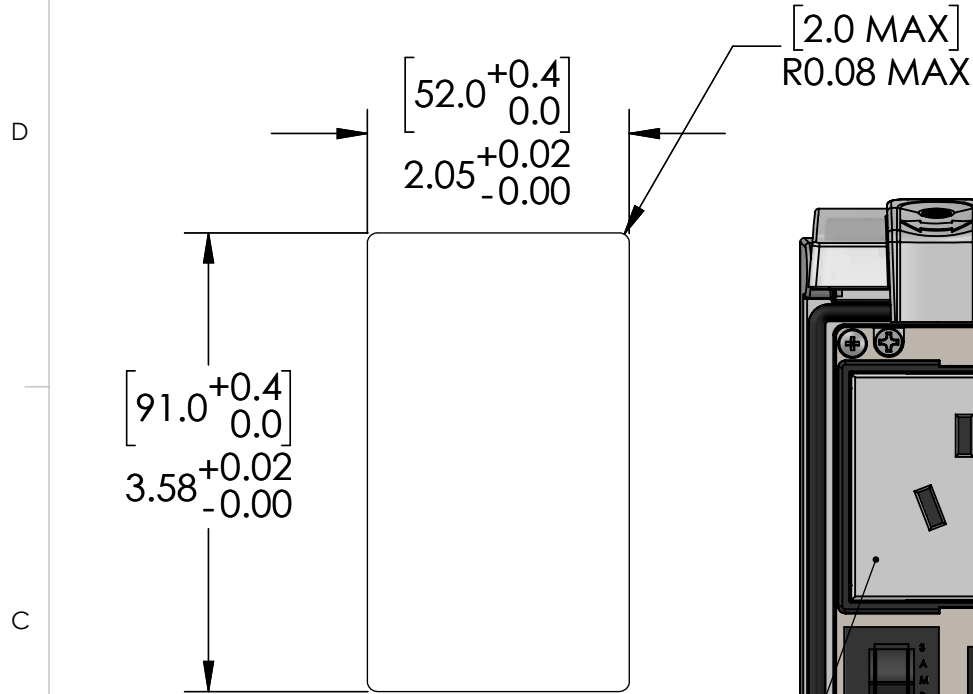
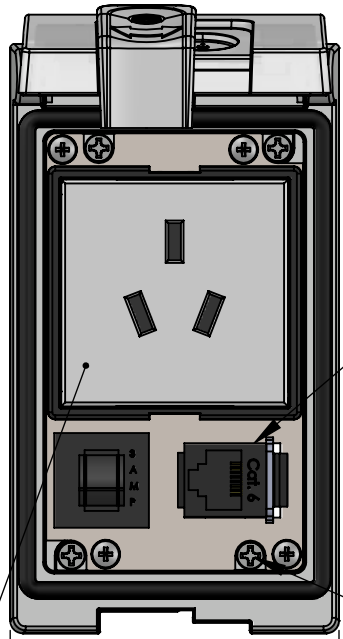


PANEL CUTOUT



CHINESE RECEPTACLE
10A, 250V, CCC CERTIFICATION

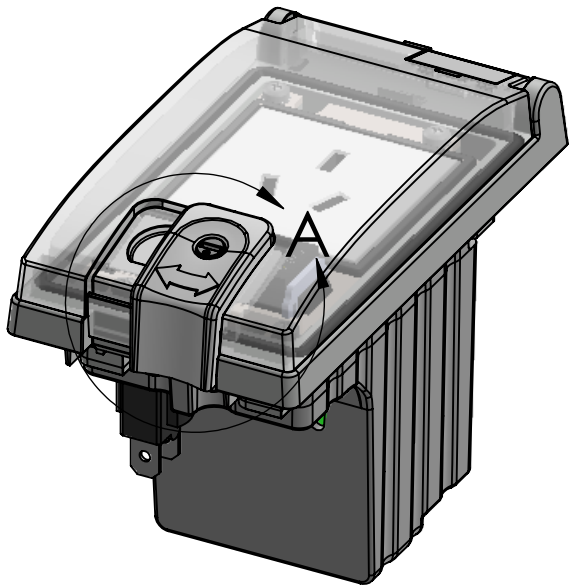


RJ45 Cat 6 Jack
EXTERIOR/INTERIOR

(X4) USE PH2 SCREW
DRIVER ON MOUNTING
SCREWS. (REF. MOUNTING
SCREW TORQUE)

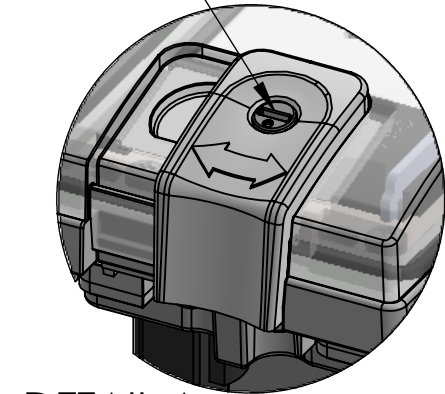
ROTATE TWO TURNS COUNTER
CLOCKWISE TO RELEASE THE
TURN BUCKLE PRIOR TO TIGHTENING

TURN BUCKLES ROTATE 90 DEG. INTO
THEIR CLAMPING POSITION AS
MOUNTING SCREWS TIGHTEN.
DO NOT OVER-TORQUE!

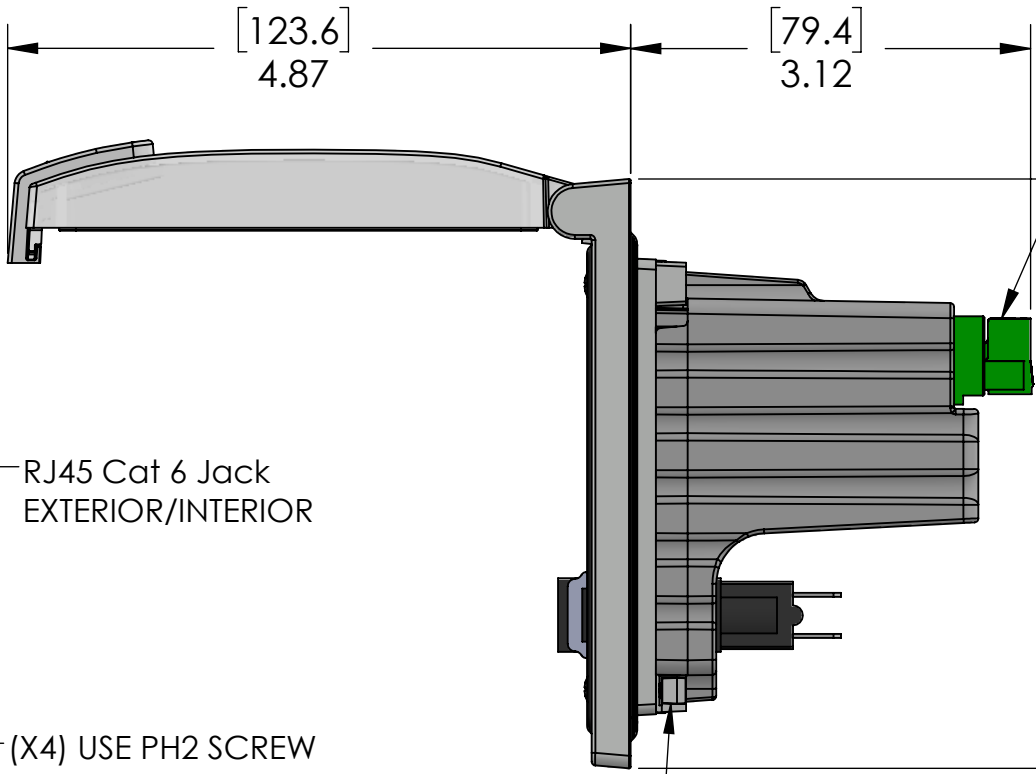


SLIDE LATCH TO OPEN/CLOSE
ROTATE LOCK TO LOCK CLOSED

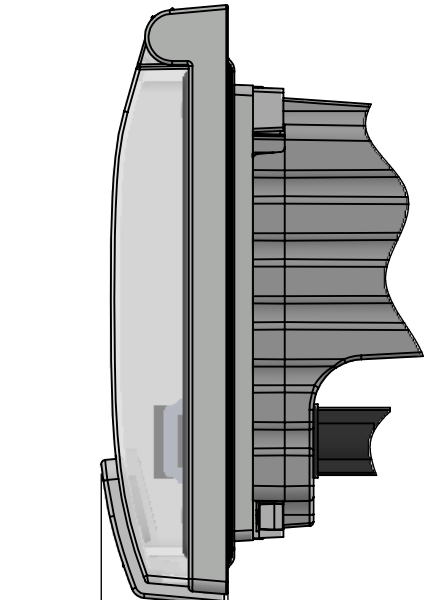
LOCK



DETAIL A
SCALE 1 : 1



3 POLE PLUGGABLE
TERMINAL BLOCK
FOR INCOMING POWER



These devices shall be mounted on enclosures having adequate strength and thickness and with adequate spacing provided. Seal rating is based on mounting to a surface that is clean, flat and smooth.

PIC RATINGS/SPECIFICATIONS

VOLTS:	250V
AMPS:	3A
SCCR:	0.2kA
NEMA/UL EN 60529:	4, 12 IP65
PANEL THICKNESS:	5.0mm max
MOUNTING SCREW TORQUE:	0.8N-m
TERMINAL BLOCK TORQUE:	0.5N-m
INCOMING POWER WIRE SIZE:	0.25 - 2.5 sq mm / 24-12AWG
WIRE STRIP LENGTH:	7 - 8 mm

OPERATING TEMPERATURE: (-5°C / +50° C (+23° F / +122° F))

HOUSING MATERIALS		UNLESS OTHERWISE SPECIFIED:	
BODY:	NICKEL PLATED ZINC	DIMENSIONS ARE IN INCHES AND [MM]	
GASKETS:	PUR FIPG		
FRONT COVER:	POLYCARBONATE		
LATCH & LOCK:	PBT		
BACK COVER:	POLYPROPYLENE		

PROPRIETARY AND CONFIDENTIAL
THE INFORMATION CONTAINED IN THIS
DRAWING IS THE SOLE PROPERTY OF
MENCOM CORPORATION. ANY
REPRODUCTION IN PART OR AS A WHOLE
WITHOUT THE WRITTEN PERMISSION OF
MENCOM CORPORATION IS
PROHIBITED.

HOUSING MATERIALS		UNLESS OTHERWISE SPECIFIED:	
BODY:	NICKEL PLATED ZINC	DIMENSIONS ARE IN INCHES AND [MM]	
GASKETS:	PUR FIPG		
FRONT COVER:	POLYCARBONATE		
LATCH & LOCK:	PBT		
BACK COVER:	POLYPROPYLENE		

DRAWN BY	DG
DRAWN DATE	03/09/2018
CHECKED BY	
CHECK DATE	

COMMENTS:	

MENCOM CORPORATION

TITLE:
CHINA 10A RCPT; RJ45; 3A; LP1

SIZE	DWG. NO.	REV
B	LP1-CH1-RJ45-R	A
SCALE: 2:3	WEIGHT:	SHEET 1 OF 1