

PART NUMBER:	"S" MM	"S1" MM	"S2" MM	"S3" MM	"Di" MM
KADL-6K-2G	125	80	140	95	7
PLUS 1 KADL-EXP	125	102.5	140	117.5	7
PLUS 2 KADL-EXP	125	125	140	140	7

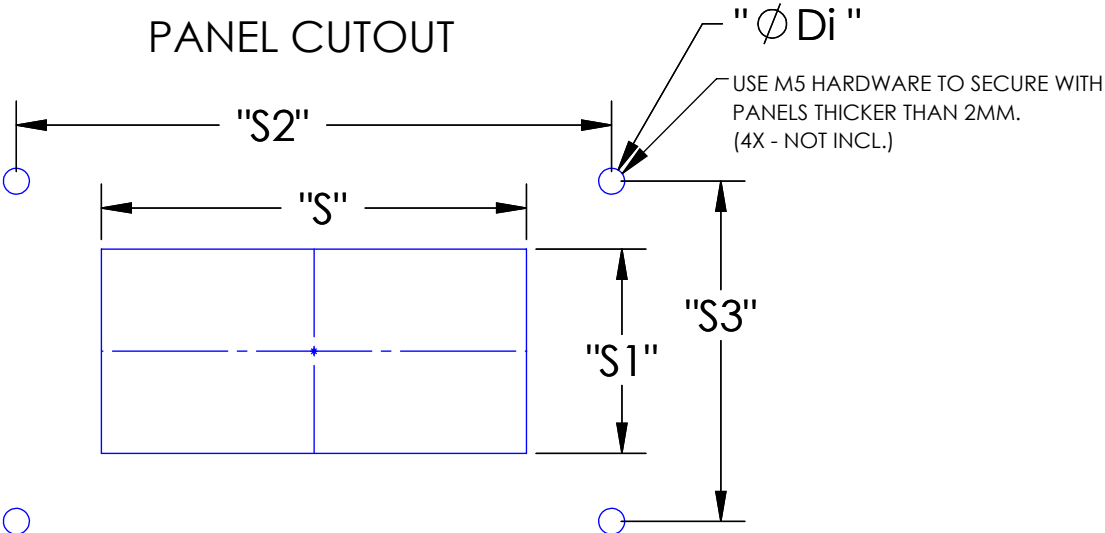
D

C

B

A

PANEL CUTOUT



Mounting: mounting in wall thickness from 1,5 - 2,0mm, for walls with thickness larger 2,0 mm the KADL can be fixed with screws

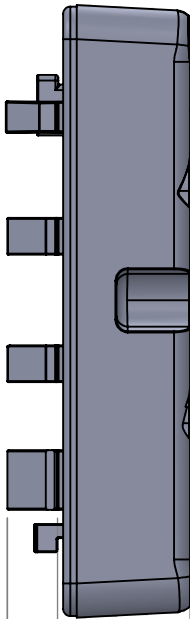
GROMMETS			
SMALL PART #:	Cable Range	LARGE PART #:	Cable Range:
TK-3-5	3-5MM	TG-15-17	15-17MM
TK-5-7	5-7MM	TG-17-19	17-19MM
TK-7-9	7-9MM	TG-19-21	19-21MM
TK-9-11	9-11MM	TG-21-23	21-23MM
TK-11-13	11-13MM	TG-23-25	23-25MM
TK-13-15	13-15MM	TG-25-27	25-27MM
TK-15-16	15-16MM	TG-27-29	27-29MM
TK-G	BLANK	TG-29-31	29-31MM
		TG-31-32.5	31-32.5MM
		TG-G	BLANK

GROMMETS MUST BE ORDERED SEPARATELY AS ACCESSORIES OF THE KADL CABLE SYSTEM. REF. DRAWINGS TK-ZZ & TG-ZZ FOR DETAILS

MATERIAL SPECIFICATIONS:	
RATING:	IP65 (When cable O.D. matches appropriately sized grommet.)
BODY:	POLYAMIDE PA6 V-0
TEMP:	30 C TO +100C (22 F TO +212 F)

PROPRIETARY AND CONFIDENTIAL
THE INFORMATION CONTAINED IN THIS DRAWING IS THE SOLE PROPERTY OF MENCOM CORPORATION. ANY REPRODUCTION IN PART OR AS A WHOLE WITHOUT THE WRITTEN PERMISSION OF MENCOM CORPORATION IS PROHIBITED.

MODULE LOCKS (2X)



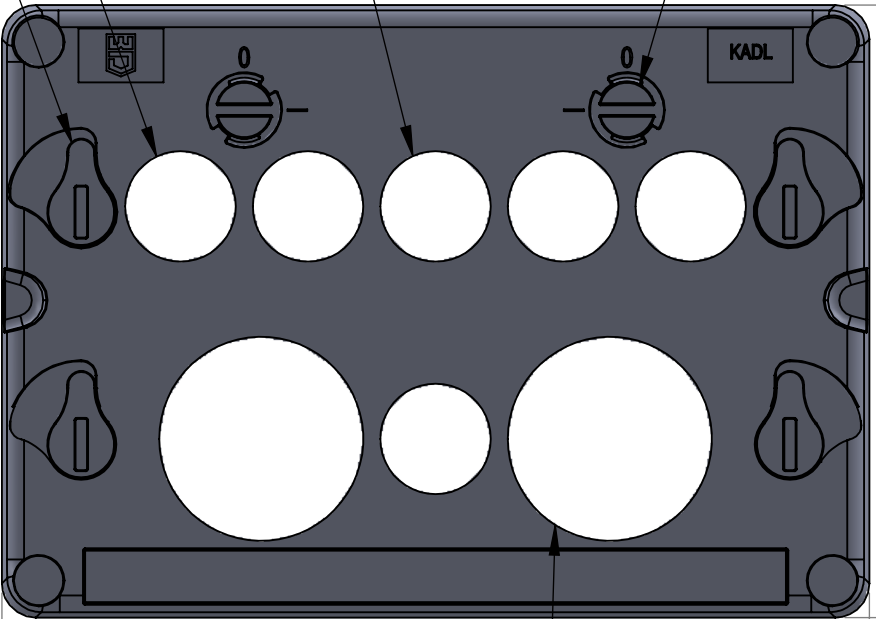
"H1"

"H"

GROMMETS ORDERED SEPARATELY PROVIDE STRAIN RELIEF AND A CLAMPING RANGE OF 3MM - 16MM (REF. NOTE)

GROMMET OPENINGS (REF. NOTE)

CUTOUT LOCKS (2X)



"L1"

"L"

GROMMETS ORDERED SEPARATELY PROVIDE STRAIN RELIEF AND A CLAMPING RANGE OF 15MM - 32.5MM (REF. NOTE)



KADL-EXP (EXPANSION INSERT) (NOT INCLUDED)

SCALE: 1:2

SYSTEM FEATURES						
MODULAR DESIGN						
HIGH PACKAGING DENSITY						
TOOL FREE ENTRY AND CONNECTION						
STRAIN RELIEF FOR CABLES						
EASY ENLARGENTS AND ADJUSTMENTS						
CLAMPING RANGE 3MM - 16MM						

PART NUMBER:	# OF ENTRIES	HOLE GROUP SIZE MM	"L" MM	"L1" MM	"H" MM	"H1" MM
KADL-6K-2G	6 & 2	125 X 80	153	108	32.3	8.9
PLUS 1 KADL-EXP*	11 & 2	125 X 102.5	153	130.5	32.3	8.9
PLUS 2 KADL-EXP*	16 & 2	125 X 125	153	153	32.3	8.9
*KADL-EXP (SOLD SEPERATLEY)	PLUS 5	N/A	153	27	32.3	8.9

UNLESS OTHERWISE SPECIFIED:		DRAWN BY	DCG
DIMENSIONS ARE IN MM		DRAWN DATE	06/09/2020
		CHECKED BY	ADM
		CHECK DATE	06/09/2020
	COMMENTS:		
MATERIAL			
FINISH			
DO NOT SCALE DRAWING			

MENCOM CORPORATION		
TITLE: KADL MODULAR CABLE ENTRY SYS		
SIZE B	DWG. NO. KADL-6K-2G	REV B
SCALE: 3:4		WEIGHT:
SHEET 1 OF 1		