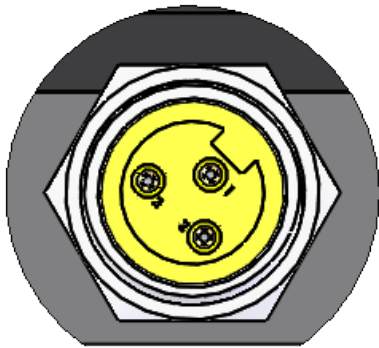
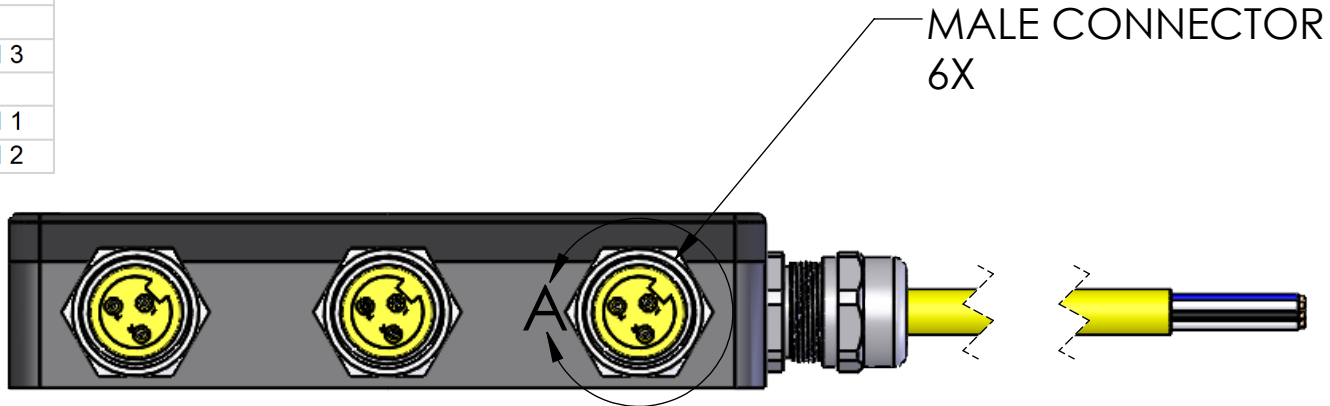


WIRING						
TRUNK (cable)	PORT 1	PORT 2	PORT 3	PORT 4	PORT 5	PORT 6
ORANGE		PIN 2				
BLUE				PIN 2		
WHITE/BLACK					PIN 2	
BLACK			PIN 2			
WHITE	PIN 3	PIN 3	PIN 3	PIN 3	PIN 3	PIN 3
RED	PIN 2					
GRN/YEL	PIN 1	PIN 1	PIN 1	PIN 1	PIN 1	PIN 1
RED/BLK						PIN 2



DETAIL A
SCALE 2 : 1.5

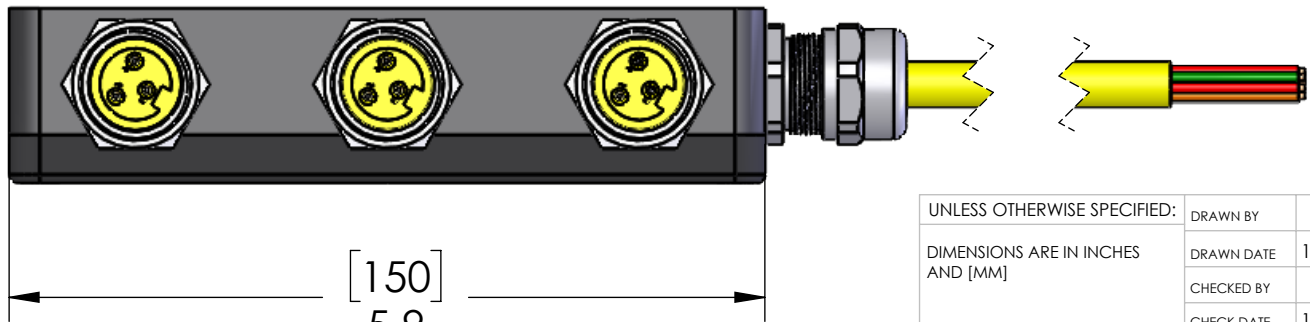
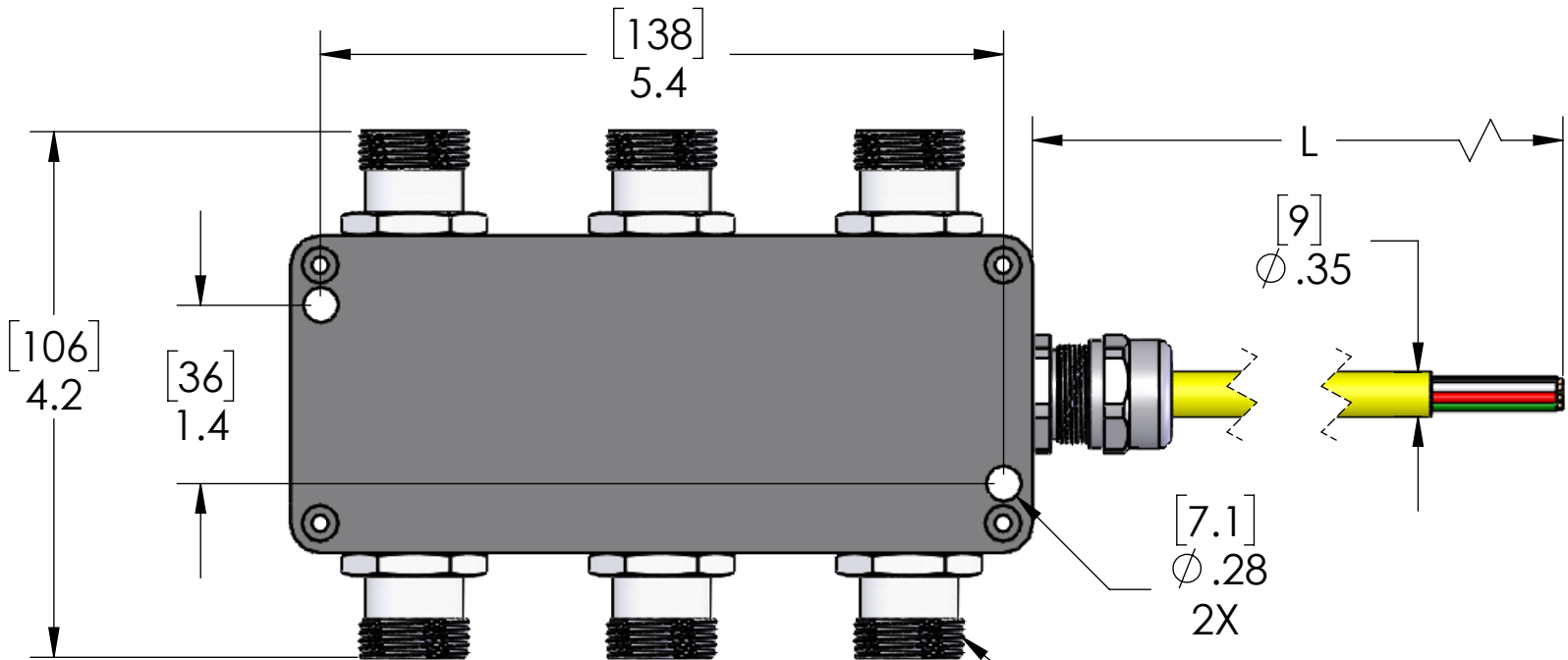


TABLE A	
PART NUMBER	L
JIN-430-008-C010	40" [1M]
JIN-430-008-C020	79" [2M]
JIN-430-008-C030	118" [3M]
JIN-430-008-C050	197" [5M]
JIN-430-008-C060	238" [6M]
JIN-430-008-C100	393" [10M]
JIN-430-008-C150	590" [15M]
JIN-430-008-C200	786" [20M]

SPECIFICATIONS:	
MATERIALS:	
BODY:	ZINC DIECAST WITH BLACK EPOXY COAT
RECEPTACLE SHELLS:	CLEAR ANODIZED ALUMINUM
RECEPTACLE INSERTS:	YELLOW PVC
CONTACTS:	GOLD PLATED COPPER ALLOY
CABLE GLAND	NICKEL PLATED BRASS
CABLE:	18/8 SJOOW CABLE
AMPERAGE:	4A / PORT, 8A TOTAL
TEMPERATURE:	-30°C to 80°C

PROPRIETARY AND CONFIDENTIAL
THE INFORMATION CONTAINED IN THIS
DRAWING IS THE SOLE PROPERTY OF
MENCOM CORPORATION. ANY
REPRODUCTION IN PART OR AS A WHOLE
WITHOUT THE WRITTEN PERMISSION OF
MENCOM CORPORATION IS
PROHIBITED.

UNLESS OTHERWISE SPECIFIED: DIMENSIONS ARE IN INCHES AND [MM]	DRAWN BY	JJH
	DRAWN DATE	11/06/2019
	CHECKED BY	ADM
	CHECK DATE	11/07/2019
MATERIAL	COMMENTS:	
FINISH		
DO NOT SCALE DRAWING		

MENCOM CORPORATION		
TITLE:		
SIZE	DWG. NO.	REV
B	JIN-630-008-CZZ	A
SCALE: 1:1.5	WEIGHT:	SHEET 1 OF 1