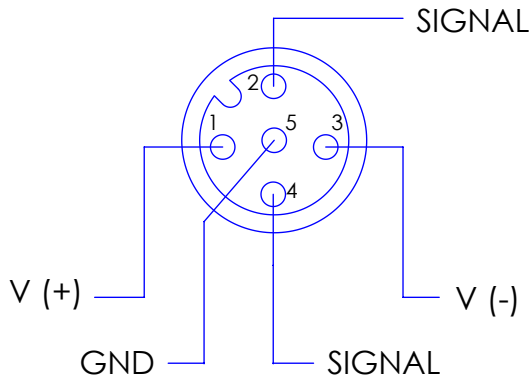
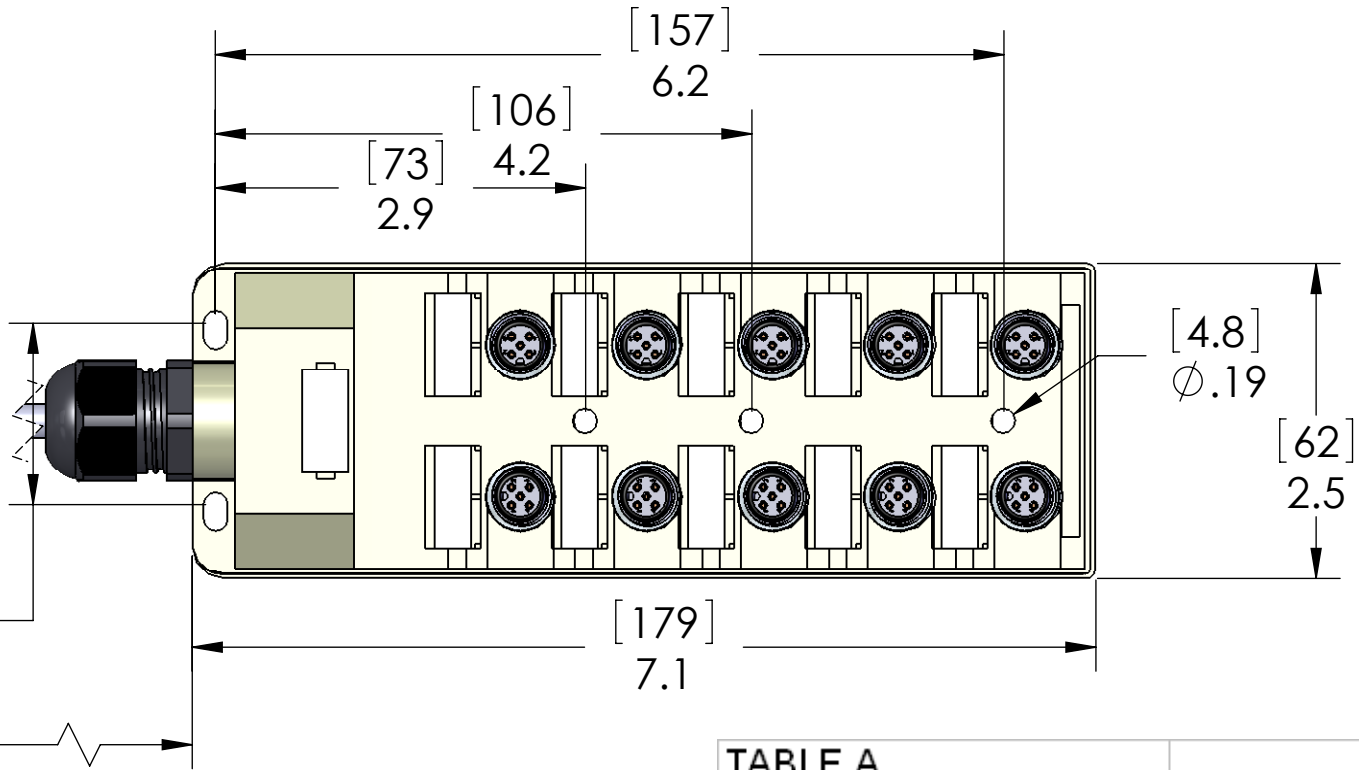
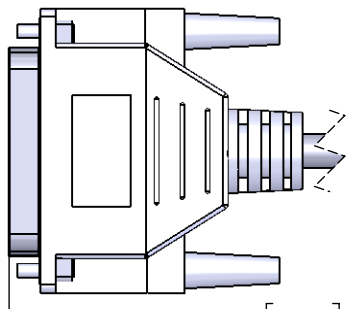
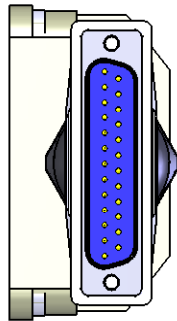


WIRING		
DB25 PIN #	PORT/PIN	FUNCTION
22 & 23	ALL PORTS PIN 1	V+
SHIELD	ALL PORTS PIN 5	GND
24 & 25	ALL PORTS PIN 3	V-
1	1 / 4	I/O
3	2 / 4	I/O
5	3 / 4	I/O
7	4 / 4	I/O
9	5 / 4	I/O
11	6 / 4	I/O
13	7 / 4	I/O
15	8 / 4	I/O
17	9 / 4	I/O
19	10 / 4	I/O
2	1 / 2	I/O
4	2 / 2	I/O
6	3 / 2	I/O
8	4 / 2	I/O
10	5 / 2	I/O
12	6 / 2	I/O
14	7 / 2	I/O
16	8 / 2	I/O
18	9 / 2	I/O
20	10 / 2	I/O



MATERIALS:	
BODY:	POLYPROPYLENE
MARKERS:	POLYAMIDE
SHELLS:	NICKEL PLATED BRASS
INSERTS:	POLYAMIDE
CONTACTS:	GOLD PLATED COPPER ALLOY
O-RINGS:	NBR
CABLE:	PVC
RATINGS:	
VOLTS:	150V MAX
AMPS:	2A PER PORT, 8A PER BLOCK

**PROPRIETARY AND CONFIDENTIAL**  
THE INFORMATION CONTAINED IN THIS DRAWING IS THE SOLE PROPERTY OF MENCOM CORPORATION. ANY REPRODUCTION IN PART OR AS A WHOLE WITHOUT THE WRITTEN PERMISSION OF MENCOM CORPORATION IS PROHIBITED.

REVISIONS			
REV.	DESCRIPTION	DATE	APPROVED
A	REDRAWN IN SW	8/22/2007	

TABLE A	
P/N	L
JDC-050-025-D003	12" [0.3m]
JDC-050-025-D010	40" [1m]
JDC-050-025-D020	79" [2m]
JDC-050-025-D030	118" [3m]
JDC-050-025-D040	157" [4m]
JDC-050-025-D050	197" [5m]

		UNLESS OTHERWISE SPECIFIED:		NAME	MENCOM CORPORATION		
		DIMENSIONS ARE IN INCHES AND [MM]	DRAWN	BEM	TITLE:		
			CHECKED				
			ENG APPR.				
			MFG APPR.				
			Q.A.		SIZE DWG. NO. REV <b>B</b> JDC-050-025-DZZ <b>A</b>		
		MATERIAL	COMMENTS:				
		FINISH					
		DO NOT SCALE DRAWING			SCALE: 2:3	WEIGHT:	SHEET 1 OF 1