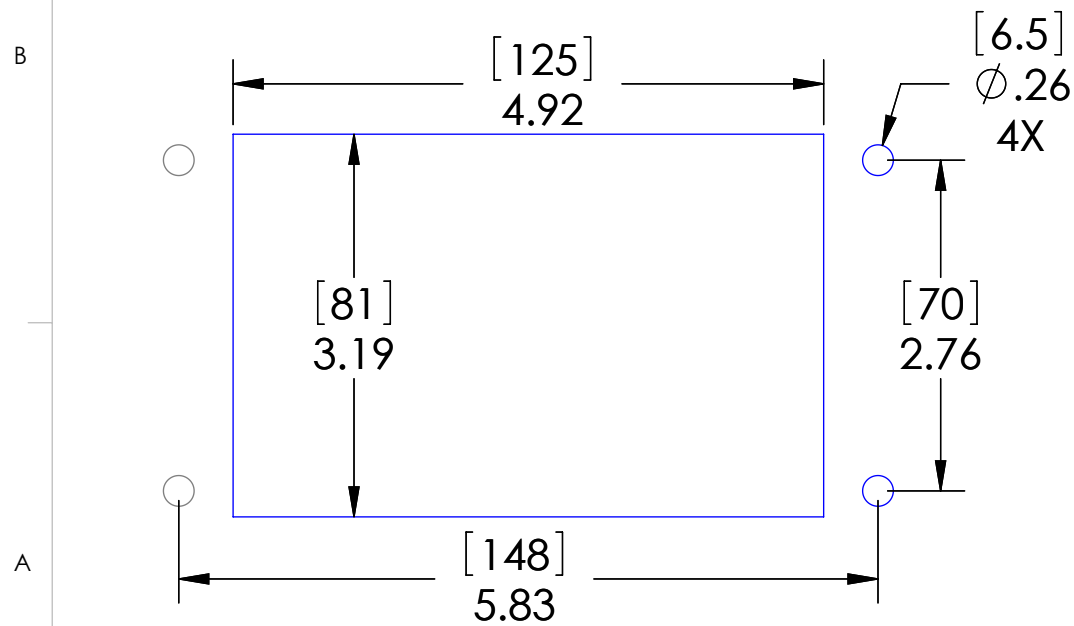


PANEL CUTOUT



These devices shall be mounted on enclosures having adequate strength and thickness and with adequate spacing provided. Seal rating is based on mounting to a surface that is clean, flat and smooth.

HOUSING MATERIALS	
BODY:	EPOXY COATED DIE CAST ALUMINUM
GASKET:	THERMOPLASTIC ELASTOMER
HANDLE:	STAINLESS STEEL

PIC RATINGS/SPECIFICATIONS	
VOLTS:	125V
AMPS:	3A
SCCR:	0.2kA
NEMA/UL EN 60529:	4, 4X, 12 IP65
MOUNTING SCREW SIZE:	M6 (1/4-20) (304 or 316SS for 4X)
MOUNTING SCREW TORQUE:	3.0~3.6N-m (2.2~2.7 Lb-Ft)
INCOMING POWER WIRE SIZE:	0.5 ~ 4.0 sq mm / 20-12AWG
WIRE STRIP LENGTH:	10 ~ 11 mm

OPERATING TEMPERATURE: (-10°C / +60° C (14° F / +140° F))

MOUNTING KIT ORDERED SEPARATELY CONTAINS M6x1 SS SCREW, NYLON WASHER, SPLIT LOCKWASHER AND M6 NUT
P/N: D-PIC48-MT



UNLESS OTHERWISE SPECIFIED:
 DIMENSIONS ARE IN INCHES AND [MM]

DRAWN BY:	JJH
DRAWN DATE:	07/27/2021
CHECKED BY:	DCG
CHECK DATE:	07/28/2021

MENCOM CORPORATION	
TITLE:	DPLX; 2 RJ45; USB-AA; 3A; 48

STANDARD CONFIGURATIONS UNLESS OTHERWISE NOTED		
CONN. TYPE	EXTERIOR	INTERIOR
RJ45	CAT 6 JACK	CAT 6 JACK

PROPRIETARY AND CONFIDENTIAL
 THE INFORMATION CONTAINED IN THIS DRAWING IS THE SOLE PROPERTY OF MENCOM CORPORATION. ANY REPRODUCTION IN PART OR AS A WHOLE WITHOUT THE WRITTEN PERMISSION OF MENCOM CORPORATION IS PROHIBITED.

MATERIAL	
FINISH	
DO NOT SCALE DRAWING	

COMMENTS:	
-----------	--

SIZE B	DWG. NO. GF-2RJ45-USB-AFAF-R-48	REV C
SCALE: 5:8	WEIGHT:	SHEET 1 OF 1