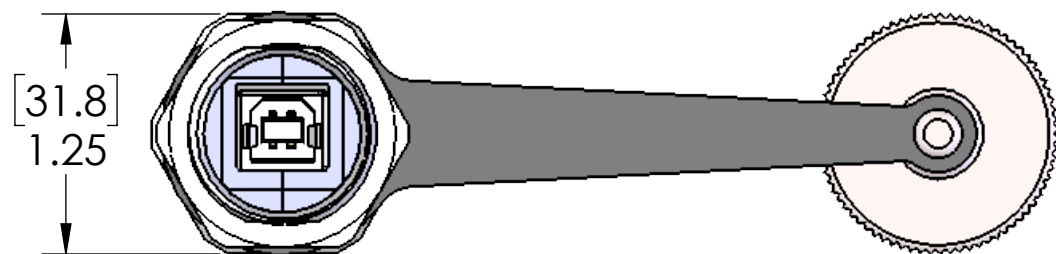
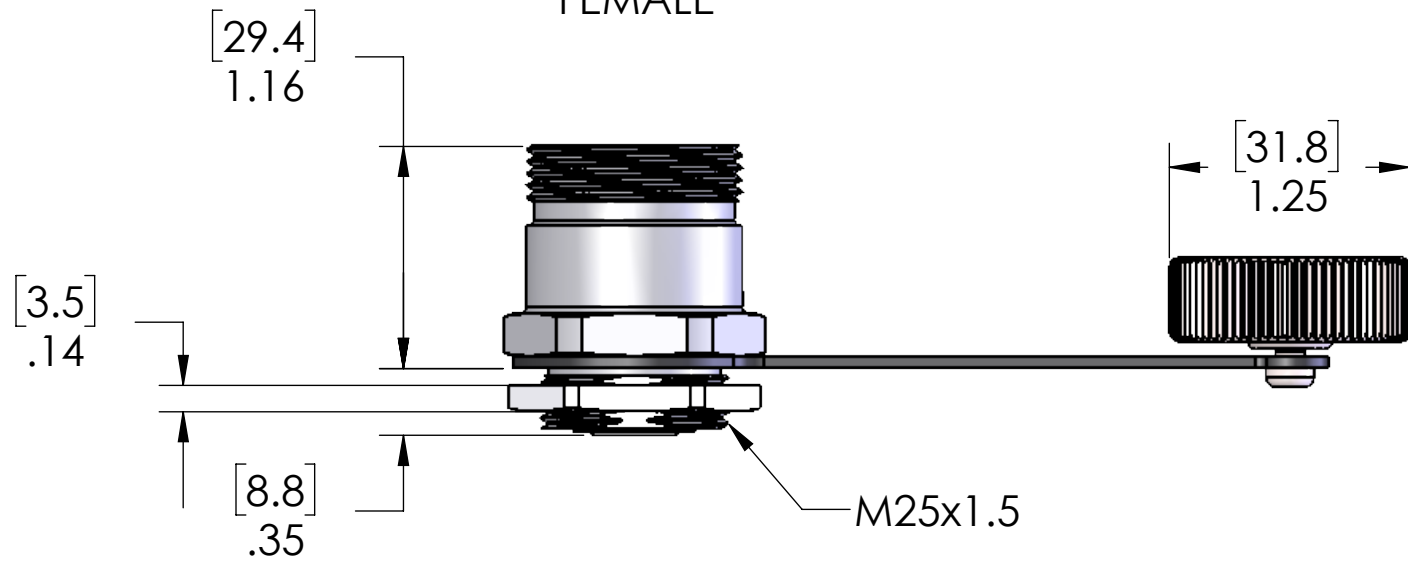
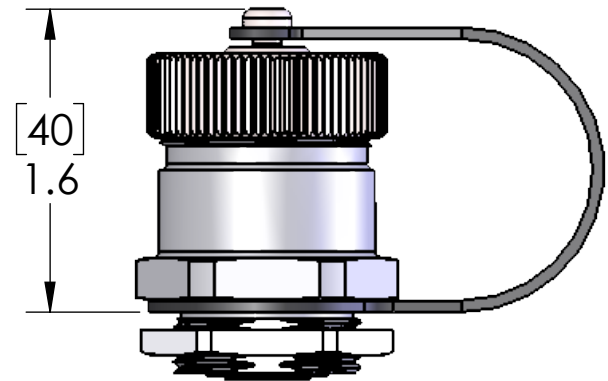
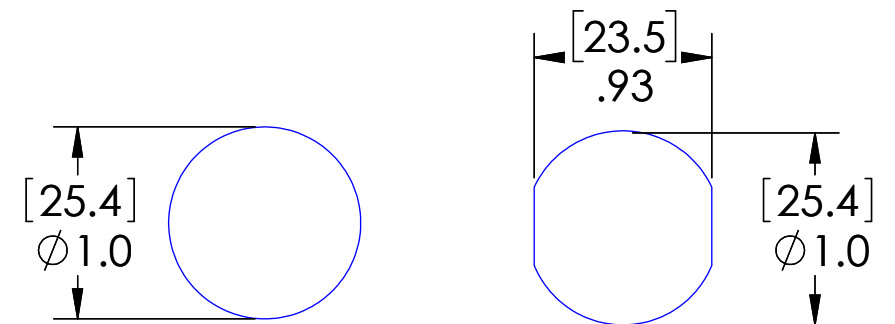


USB TYPE A
FEMALE



USB TYPE B
FEMALE



SUGGESTED CUT-OUTS

MATERIALS:	
BODY & CAP:	316 STAINLESS STEEL
TETHER/GASKET:	TPE
CONNECTOR:	USB-A 3.0 FEM - USB-B 2.0 FEM
LOCKNUT:	NICKEL PLATED BRASS
CERTIFICATIONS:	
SEAL:	UL TYPE 4, 4X, 6P, 12 IP67 & 69
US:	UL LISTED
CANADA:	c-UL LISTED

PROPRIETARY AND CONFIDENTIAL
THE INFORMATION CONTAINED IN THIS
DRAWING IS THE SOLE PROPERTY OF
MENCOM CORPORATION. ANY
REPRODUCTION IN PART OR AS A WHOLE
WITHOUT THE WRITTEN PERMISSION OF
MENCOM CORPORATION IS
PROHIBITED.

UNLESS OTHERWISE SPECIFIED: DIMENSIONS ARE IN INCHES AND [MM]	DRAWN BY	ADM	MENCOM CORPORATION TITLE:		
	DRAWN DATE	09/22/2016			
	CHECKED BY				
	CHECK DATE				
MATERIAL	COMMENTS:		SIZE	DWG. NO.	REV
FINISH			B	D-USB-AFBF-M25-SS	C
DO NOT SCALE DRAWING			SCALE: 1:1	WEIGHT:	SHEET 1 OF 1