

8 7 6 5 4 3 2 1

D

C

B

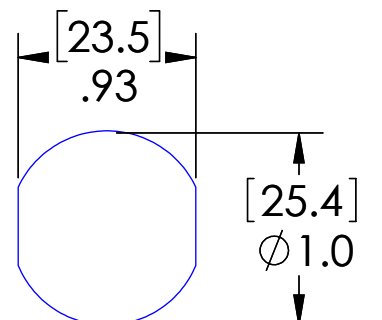
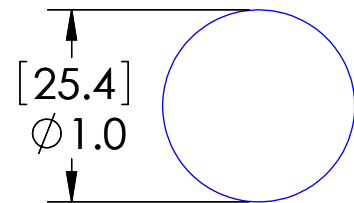
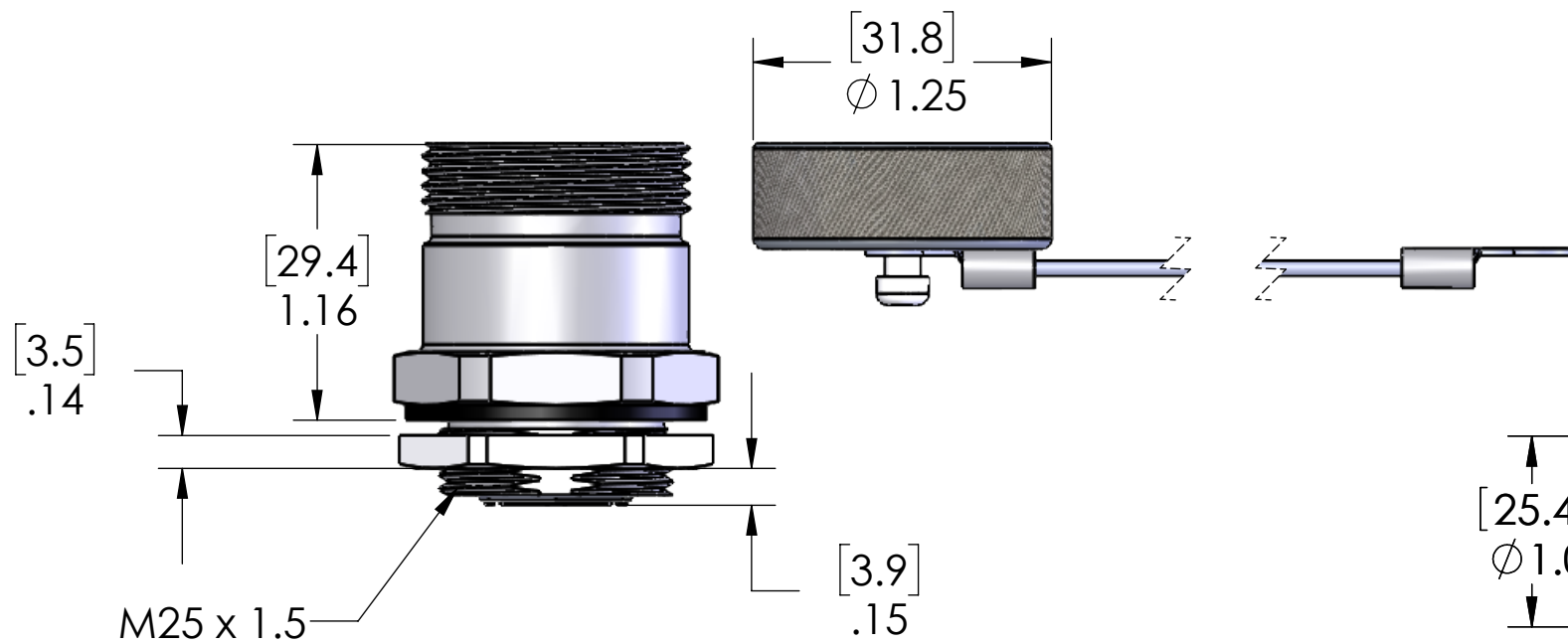
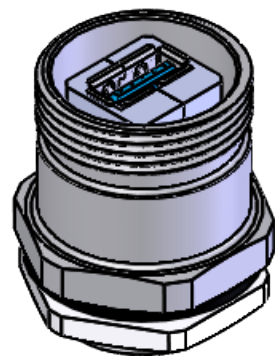
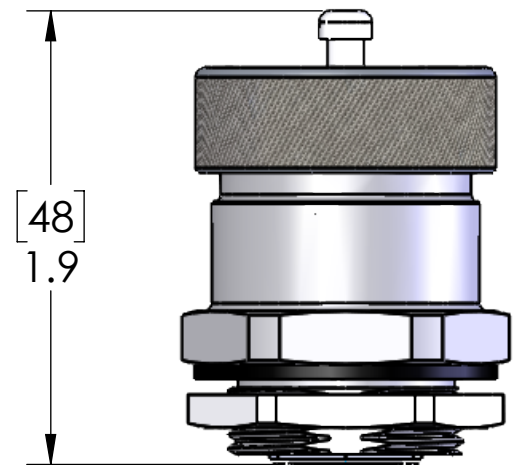
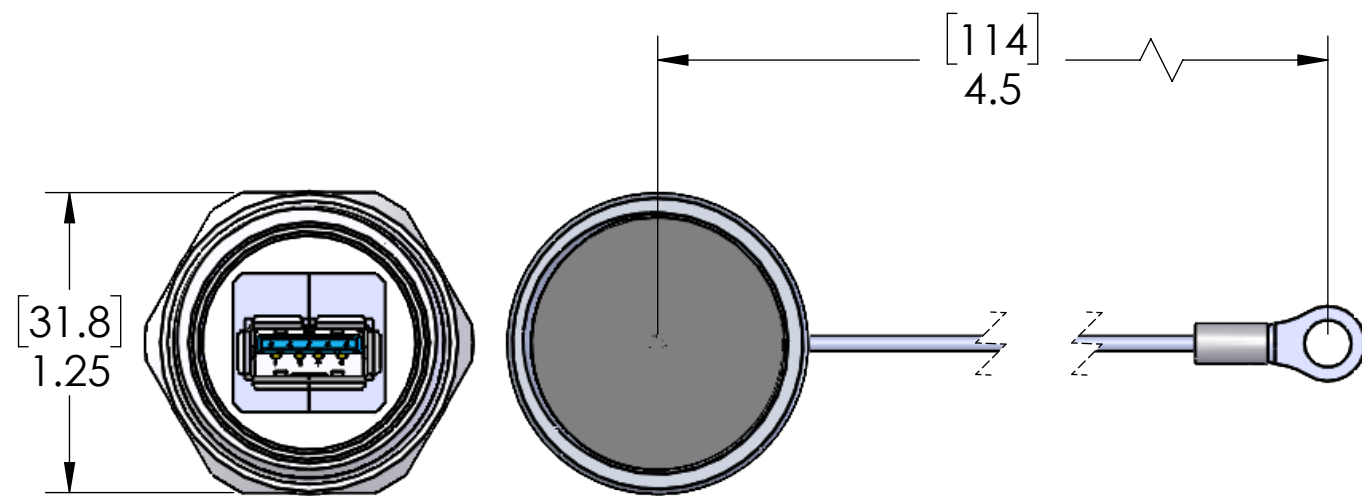
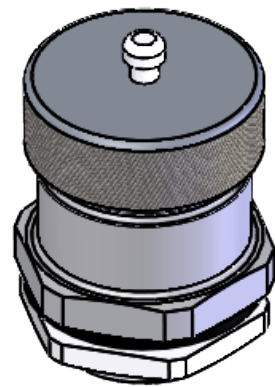
A

D

C

B

A



## SUGGESTED CUT-OUTS

<b>MATERIALS:</b>	
BODY & CAP:	STAINLESS STEEL
TETHER/GASKET:	STAINLESS STEEL
CONNECTOR:	USB-A 3.0 FEM - USB-A 3.0 FEM
LOCKNUT:	NICKEL PLATED BRASS
<b>CERTIFICATIONS:</b>	
SEAL:	UL TYPE 4, 6P, 12
US:	UL LISTED
CANADA:	c-UL LISTED

**PROPRIETARY AND CONFIDENTIAL**  
THE INFORMATION CONTAINED IN THIS DRAWING IS THE SOLE PROPERTY OF MENCOM CORPORATION. ANY REPRODUCTION IN PART OR AS A WHOLE WITHOUT THE WRITTEN PERMISSION OF MENCOM CORPORATION IS PROHIBITED.

UNLESS OTHERWISE SPECIFIED:  DIMENSIONS ARE IN INCHES AND [MM]	DRAWN BY	APR	MENCOM CORPORATION		
	DRAWN DATE	04/01/2022			
	CHECKED BY	JJH			
	CHECK DATE	04/01/2022			
MATERIAL  FINISH  DO NOT SCALE DRAWING	COMMENTS:		TITLE:		
			SIZE	DWG. NO.	REV
			<b>B</b>	D-USB-AFAF-M25-SSLY	<b>A</b>
SCALE: 1:1		WEIGHT:	SHEET 1 OF 1		