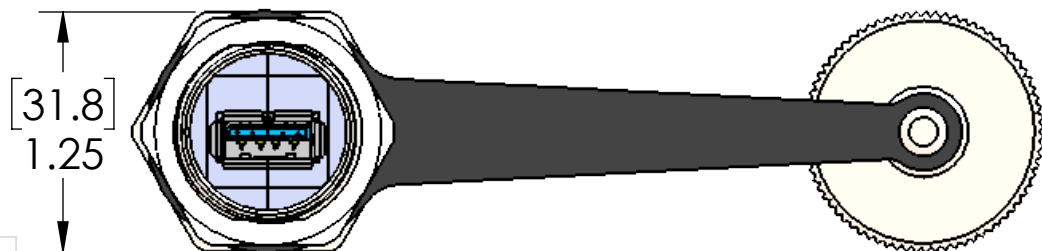
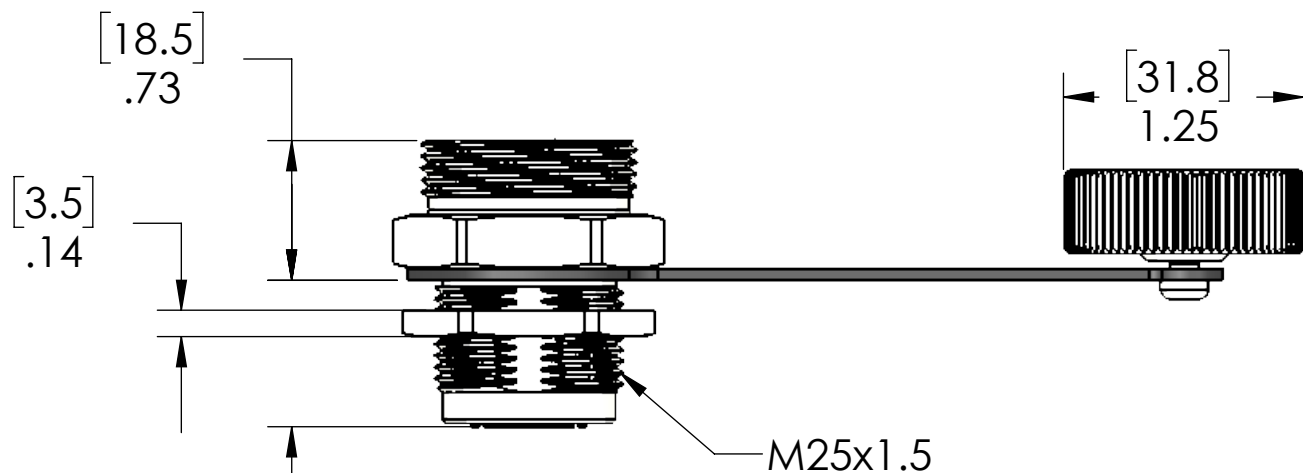
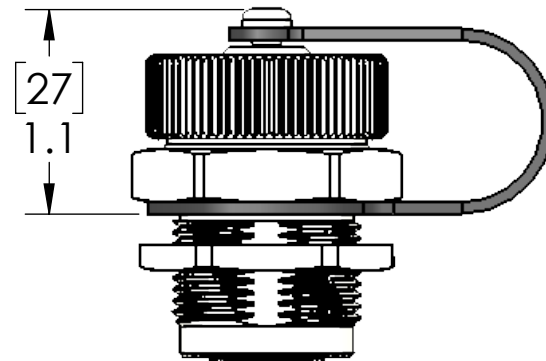
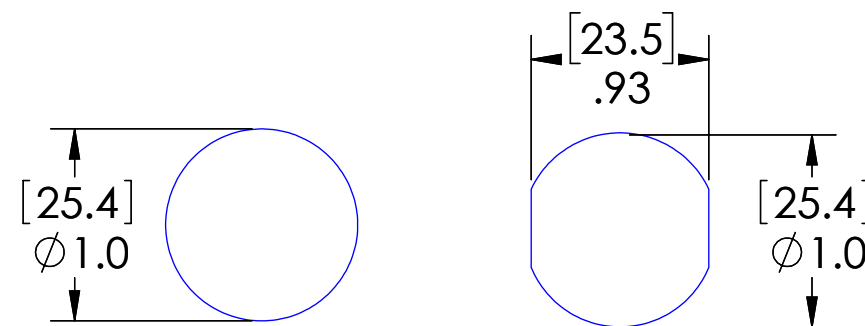


USB TYPE A
FEMALE



USB TYPE A
FEMALE



SUGGESTED CUT-OUTS

MATERIALS:	
BODY & CAP:	316 STAINLESS STEEL
TETHER/GASKET:	TPE
CONNECTOR:	USB-A 3.0 FEM - USB-A 3.0 FEM
LOCKNUT:	NICKEL PLATED BRASS
CERTIFICATIONS:	
SEAL:	UL TYPE 4, 4X, 6P, 12
US:	UL LISTED
CANADA:	c-UL LISTED

PROPRIETARY AND CONFIDENTIAL
THE INFORMATION CONTAINED IN THIS
DRAWING IS THE SOLE PROPERTY OF
MENCOM CORPORATION. ANY
REPRODUCTION IN PART OR AS A WHOLE
WITHOUT THE WRITTEN PERMISSION OF
MENCOM CORPORATION IS
PROHIBITED.

UNLESS OTHERWISE SPECIFIED: DIMENSIONS ARE IN INCHES AND [MM]	DRAWN BY	ADM	MENCOM CORPORATION	
	DRAWN DATE	02/06/2018		
	CHECKED BY			
	CHECK DATE			
MATERIAL FINISH DO NOT SCALE DRAWING	COMMENTS:		TITLE:	
			SS USB A FEM - A FEM LO-PROFILE	
SIZE		DWG. NO.	REV	
B		D-USB-AFAF-M25-SS-LP	A	
SCALE: 1:1		WEIGHT:	SHEET 1 OF 1	