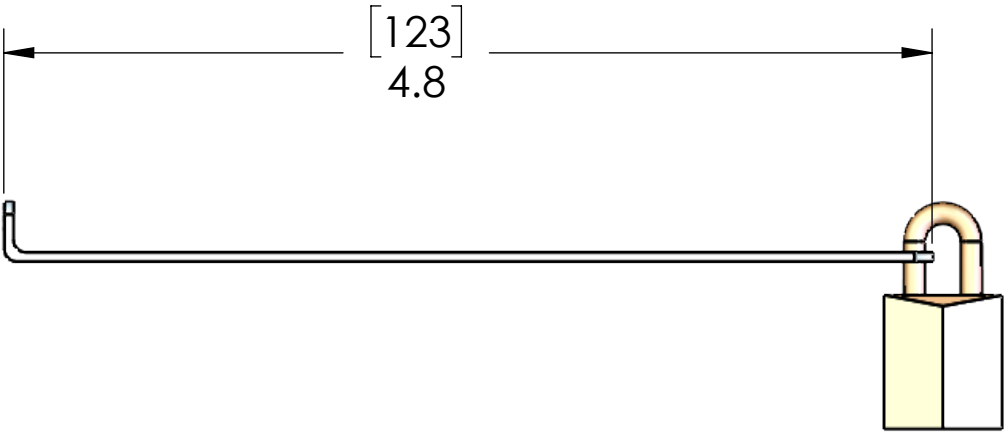
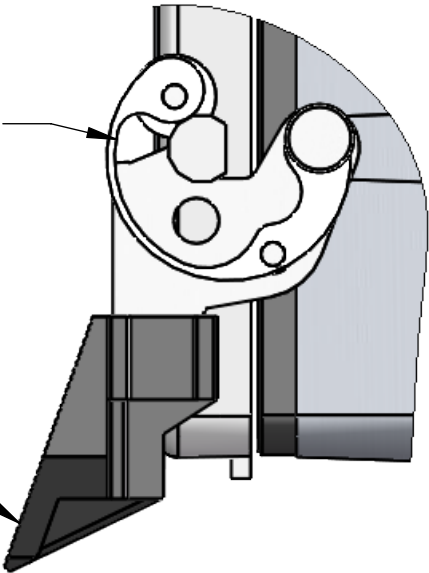


NOTE: TO INSTALL OR RELEASE THE BAR:
1. EXERT A SLIGHT DOWNWARD PRESSURE
ON THE PIC LEVER TO RELIEVE THE TENSION ON THE SPRING LATCHES.
2. SLIDE THE BAR INTO THE SLOTS NEXT TO THE LATCHES.
THE BAR WILL SLIDE FREELY IN OR OUT.



**SLIDE BAR INTO
SLOTS LOCATED HERE**



PIC HOUSING NOT INCLUDED

PART CONSISTS OF BRACKET, LOCK AND KEY.

PROPRIETARY AND CONFIDENTIAL
THE INFORMATION CONTAINED IN THIS
DRAWING IS THE SOLE PROPERTY OF
MENCOM CORPORATION. ANY
REPRODUCTION IN PART OR AS A WHOLE
WITHOUT THE WRITTEN PERMISSION OF
MENCOM CORPORATION IS
PROHIBITED.

UNLESS OTHERWISE SPECIFIED: DIMENSIONS ARE IN INCHES AND [MM]	DRAWN BY	DCG
	DRAWN DATE	09/13/2018
	CHECKED BY	JJH
	CHECK DATE	09/13/2018
MATERIAL	COMMENTS:	
FINISH		
DO NOT SCALE DRAWING		

MENCOM CORPORATION		
TITLE:		
LOCK KIT FOR PICS SZ 32 & 16		
SIZE	DWG. NO.	REV
B	D-PIC-LOCK	B
SCALE: 1:1	WEIGHT:	SHEET 1 OF 1