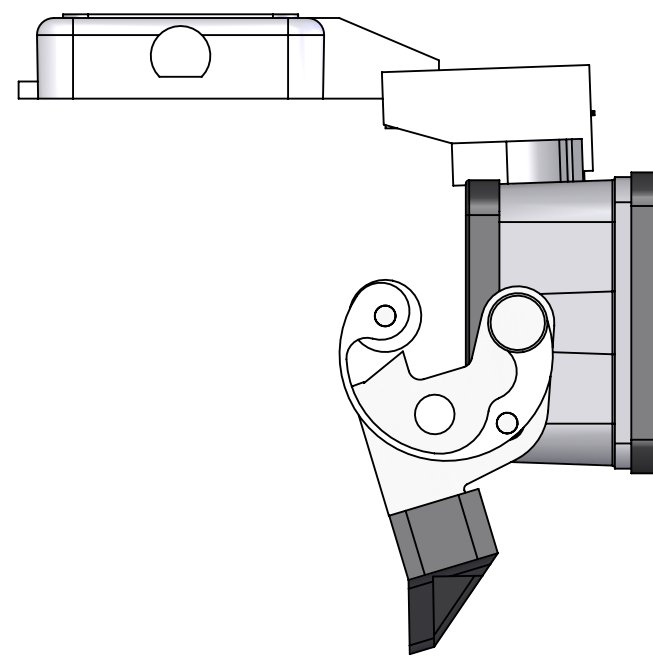
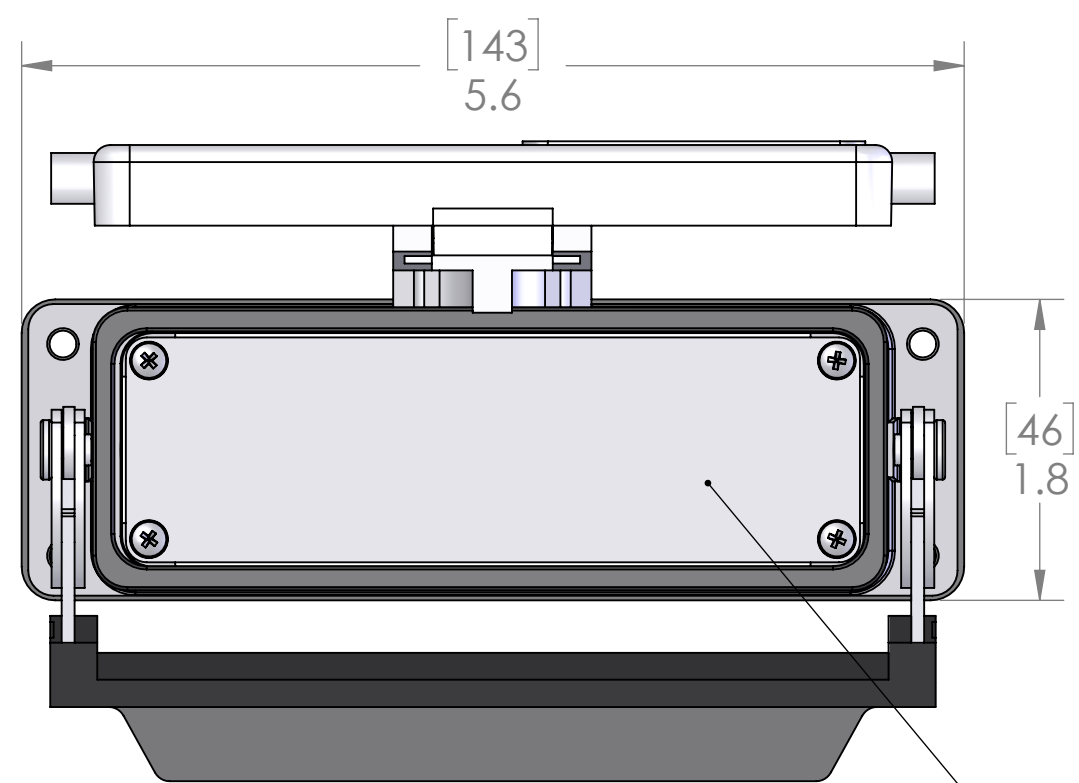


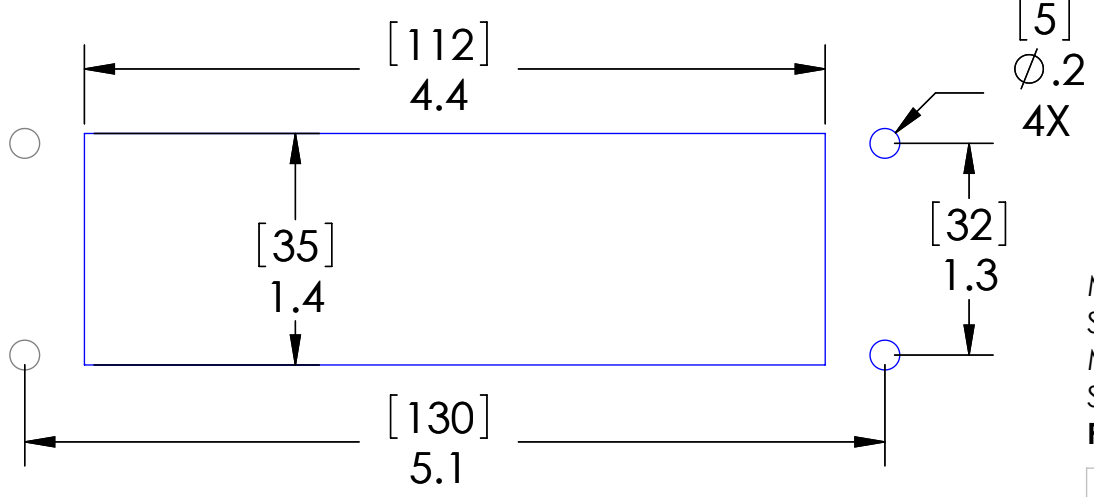
8 7 6 5 4 3 2 1

D  
C  
B  
A



BLANK 304 STAINLESS STEEL PLATE.

PANEL CUTOUT



MOUNTING KIT ORDERED SEPARATELY CONTAINS M4X0.7 SS SCREW, NYLON WASHER, SPLIT LOCKWASHER AND M4 NUT  
**P/N: D-PIC-MT**

**PROPRIETARY AND CONFIDENTIAL**  
 THE INFORMATION CONTAINED IN THIS DRAWING IS THE SOLE PROPERTY OF MENCOM CORPORATION. ANY REPRODUCTION IN PART OR AS A WHOLE WITHOUT THE WRITTEN PERMISSION OF MENCOM CORPORATION IS PROHIBITED.

HOUSING MATERIALS	
BODY:	EPOXY COATED DIE CAST ALUMINUM
GASKET:	THERMOPLASTIC ELASTOMER
HANDLE:	POLYAMIDE
LEVERS:	STAINLESS STEEL

PIC RATINGS/SPECIFICATIONS	
NEMA/UL   EN 60529:	4, 4X, 12   IP65
MOUNTING SCREW SIZE:	M4 (8-32) (304 or 316SS for 4X)
MOUNTING SCREW TORQUE:	1.2~1.8N-m (0.9~1.3 Lb-Ft)

UNLESS OTHERWISE SPECIFIED:	
DRAWN BY:	APR
DRAWN DATE:	07/02/2021
CHECKED BY:	DCG
CHECK DATE:	07/02/2021

DIMENSIONS ARE IN INCHES  
 TOLERANCES:  
 FRACTIONAL ±1/64  
 ANGULAR: MACH ±5° BEND ±5°  
 TWO PLACE DECIMAL ±.01  
 THREE PLACE DECIMAL ±.004

**MENCOM CORPORATION**  
 TITLE:  
**BLANK PLT & HOUSING ONLY;  
 SZ 24**

MATERIAL	
FINISH	
DO NOT SCALE DRAWING	

COMMENTS:

SIZE <b>B</b>	DWG. NO. <b>D-24LS</b>	REV <b>A</b>
SCALE: 7:8	WEIGHT:	SHEET 1 OF 1

8 7 6 5 4 3 2 1