

8 7 6 5 4 3 2 1

D

C

B

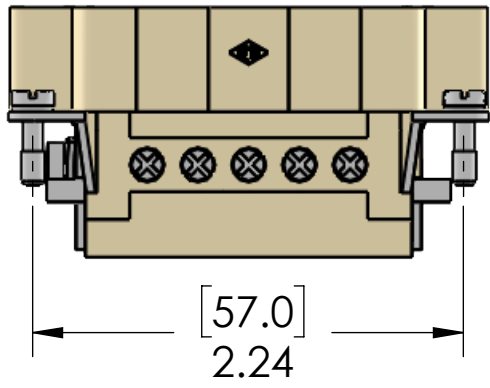
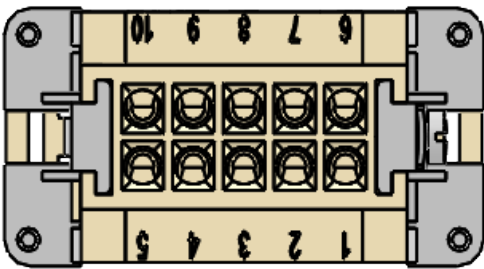
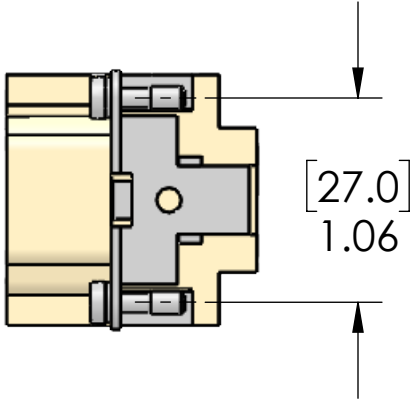
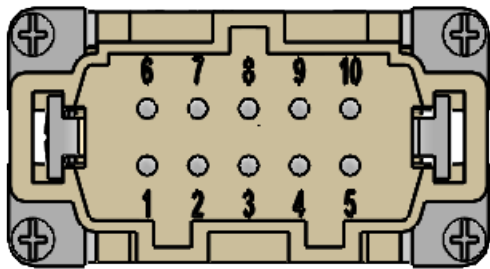
A

D

C

B

A



MATERIALS	
HOUSING:	GLASS REINFORCED THERMOPLASTIC
SCREWS:	NICKEL PLATED BRASS HARDWARE
	NICKEL PLATED BRASS
RATINGS:	UL - 600V, 16A. EN 500V/6kV/3, 16A
WIRE AWG	12 - 20AWG [4 - 0.5 sqmm]
STRIP LENGTH	7 MM
SCREW TORQUE	0.5 Nm (4.4 LB.IN.)
APPROVALS:	UL & CSA

**PROPRIETARY AND CONFIDENTIAL**  
THE INFORMATION CONTAINED IN THIS  
DRAWING IS THE SOLE PROPERTY OF  
MENCOM CORPORATION. ANY  
REPRODUCTION IN PART OR AS A WHOLE  
WITHOUT THE WRITTEN PERMISSION OF  
MENCOM CORPORATION IS  
PROHIBITED.

UNLESS OTHERWISE SPECIFIED:  DIMENSIONS ARE IN INCHES AND [MM]	DRAWN BY	ADM	MENCOM CORPORATION		
	DRAWN DATE	09/22/2016			
	CHECKED BY				
	CHECK DATE				
	COMMENTS:		TITLE:		
MATERIAL			10 PL MALE INSERT		
FINISH			SIZE	DWG. NO.	REV
DO NOT SCALE DRAWING			<b>B</b>	CNEM-10T	<b>A</b>
		SCALE: 1:1	WEIGHT:	SHEET 1 OF 1	

8 7 6 5 4 3 2 1