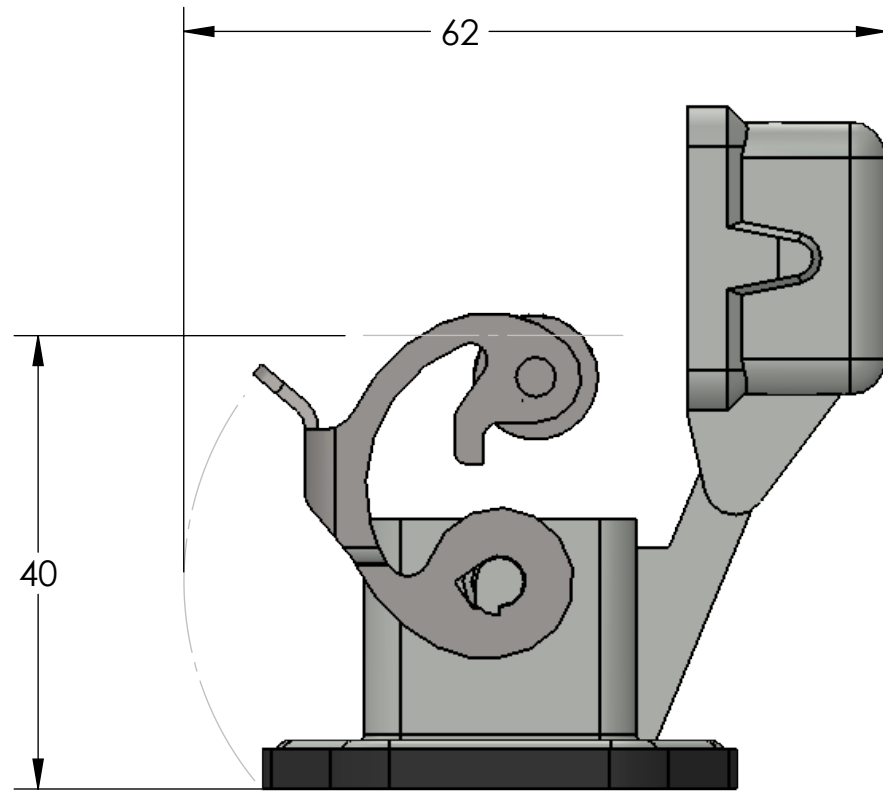
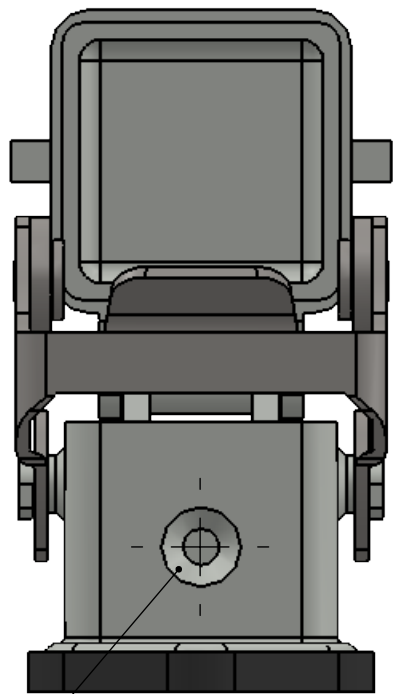
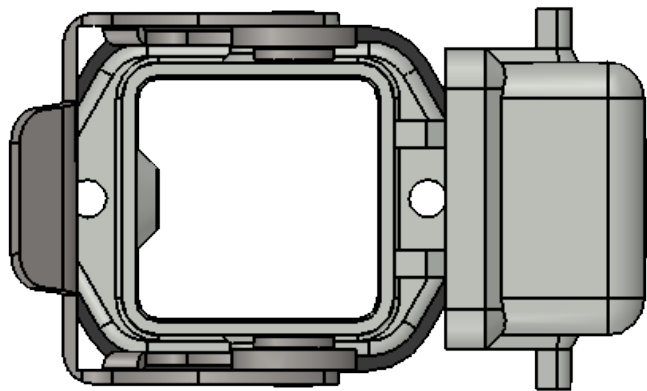


PANEL CUTOUT



TO OBTAIN THE PROTECTION RATING IP66/IP67, THE USE OF CKR-65 OR CKR-65D IS REQUIRED WHEN INSTALLING THE INSERTS. WITHOUT EITHER OF THESE KITS, THE SEAL IS RATED TO IP44

NOTE: THIS HOUSING IS ONLY TO BE USED WITH A FEMALE INSERT. IF USING A MALE INSERT, PLEASE USE CKAX-03ILSA

Brief description: bulkhead mounting housings with single lever, size "21.21", with metal cover, for **female insert**, IP44, IP66/IP67 degree of protection with CKR-65 kit or CKR-65D kit.

HOUSING MATERIALS			
BODY:		EPOXY COATED DIE CAST ALUMINUM	
LEVER		GALVANIZED STEEL	
APPROVALS			
US		UL RECOGNIZED	
CANADA		C-UL RECOGNIZED	
DRAWN BY		DCG	
DRAWN DATE		04/26/2018	
CHECKED BY		ADM	
CHECK DATE		04/26/2018	
COMMENTS:			
SIZE		DWG. NO.	
B		CKAX-03ILS	
		REV	
		A	
SCALE: 3:2		WEIGHT:	
		SHEET 1 OF 1	

PROPRIETARY AND CONFIDENTIAL
THE INFORMATION CONTAINED IN THIS DRAWING IS THE SOLE PROPERTY OF MENCOM CORPORATION. ANY REPRODUCTION IN PART OR AS A WHOLE WITHOUT THE WRITTEN PERMISSION OF MENCOM CORPORATION IS PROHIBITED.