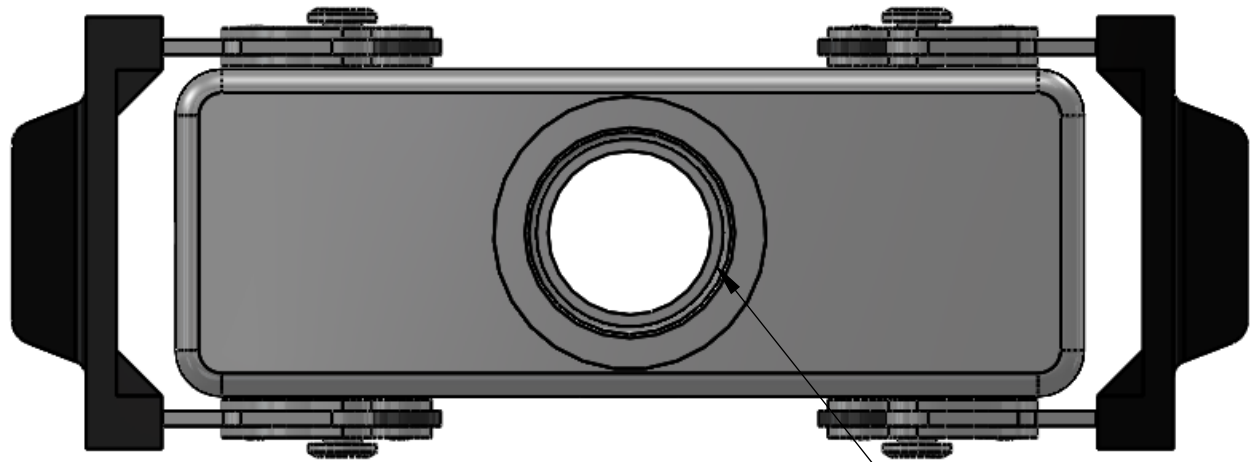
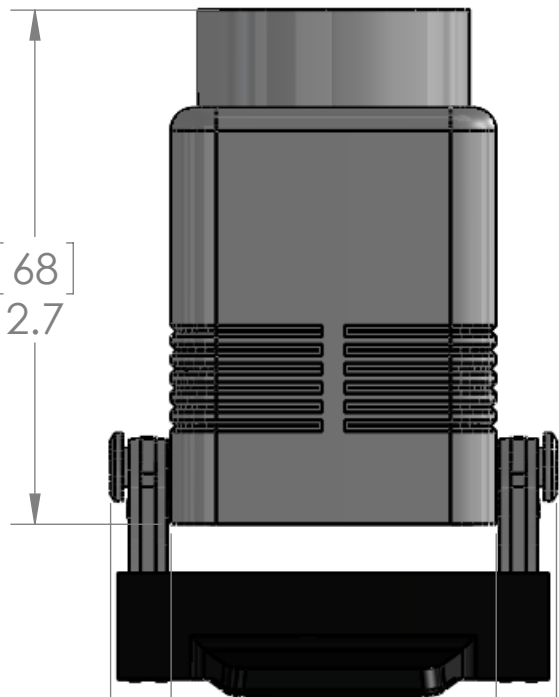
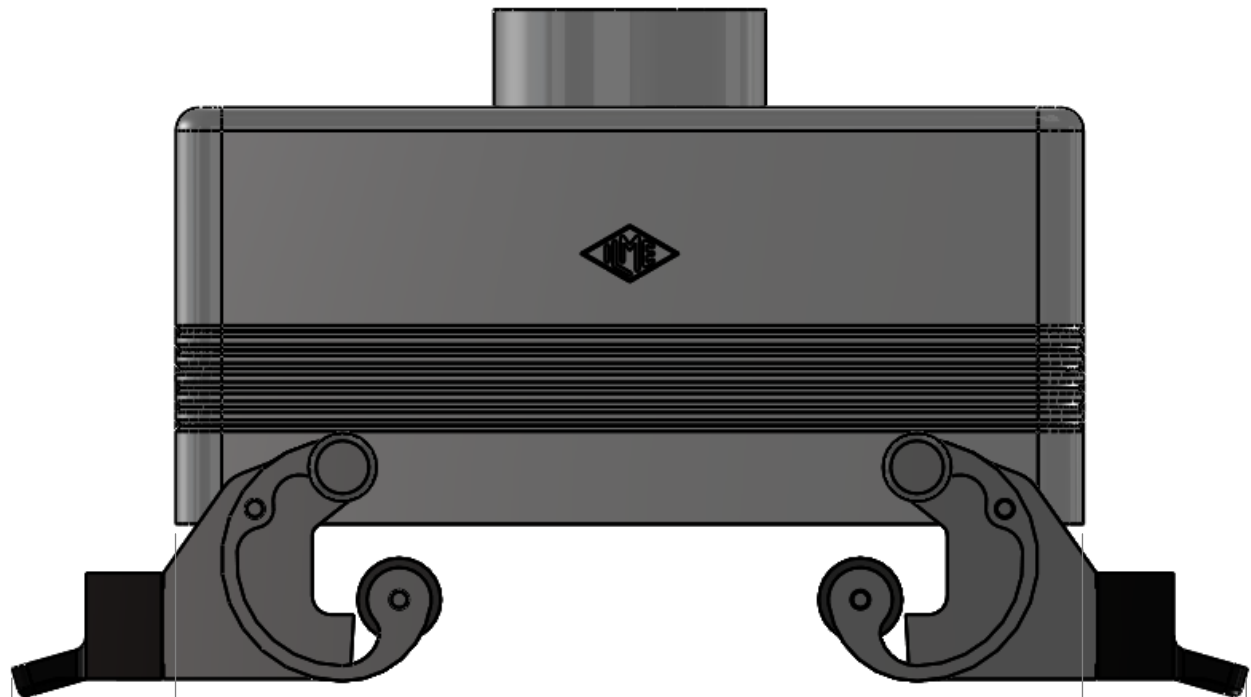


REVISIONS			
REV.	DESCRIPTION	DATE	APPROVED
A	REDRAWN IN SW	4/27/2012	CAM



PG 21 THREADED
OPENING



HOUSING MATERIALS	
BODY:	EPOXY COATED DIE CAST ALUMINUM
HANDLE:	POLYAMIDE
LEVERS:	STAINLESS STEEL
APPROVALS	
US	UL RECOGNIZED
CANADA	C-UL RECOGNIZED

		NAME		MENCOM CORPORATION	
DRAWN		CAM		TITLE:	
CHECKED					
ENG APPR.					
MFG APPR.					
Q.A.					
COMMENTS:		SIZE		DWG. NO.	
		B		CHV-24X	
		SCALE: 1:1		REV	
		WEIGHT:		A	
				SHEET 1 OF 1	

SEAL RATING OF IP 65 ONLY ACHIEVED WHEN FULLY
LATCHED TO MATING BASE AND WITH AN
APPROPRIATE SEALING GLAND INSTALLED

PROPRIETARY AND CONFIDENTIAL
THE INFORMATION CONTAINED IN THIS
DRAWING IS THE SOLE PROPERTY OF
MENCOM CORPORATION. ANY
REPRODUCTION IN PART OR AS A WHOLE
WITHOUT THE WRITTEN PERMISSION OF
MENCOM CORPORATION IS
PROHIBITED.