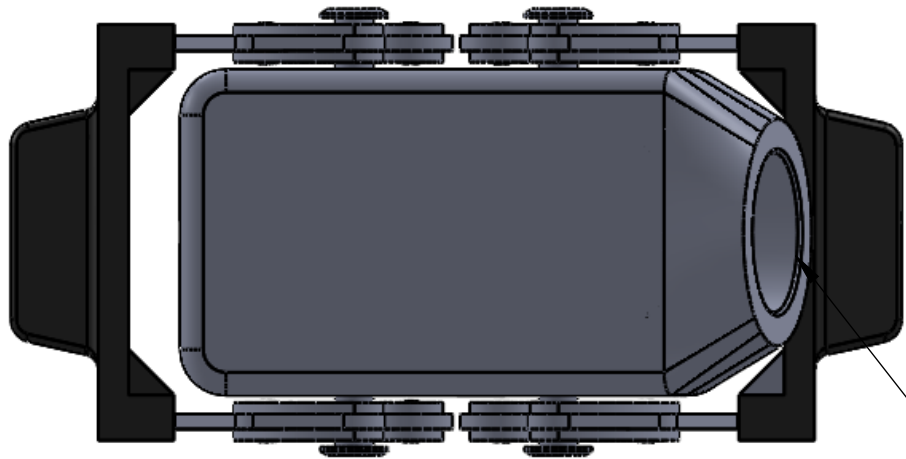


8 7 6 5 4 3 2 1

REVISIONS			
REV.	DESCRIPTION	DATE	APPROVED
A	REDRAWN IN SW	2/11/2015	BEM

D

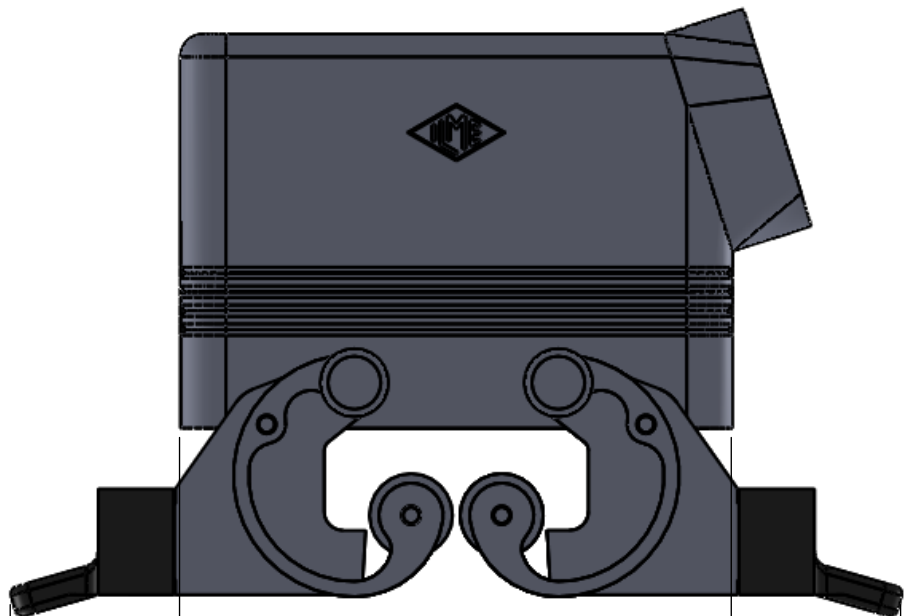
D



PG 16 THREADED
OPENING

C

C

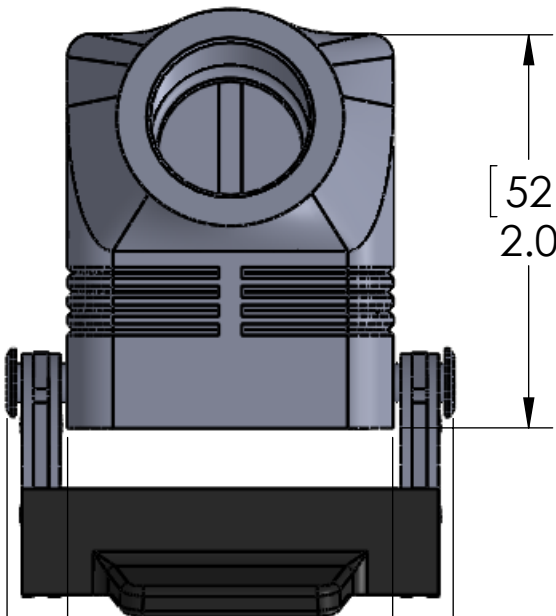


[73]
2.9

[118]
4.6

B

B



[52]
2.0

[43]
1.7

[59]
2.3

A

A

SEAL RATING OF IP 65 ONLY ACHIEVED WHEN FULLY
LATCHED TO MATING BASE AND WITH AN
APPROPRIATE SEALING GLAND INSTALLED

PROPRIETARY AND CONFIDENTIAL
THE INFORMATION CONTAINED IN THIS
DRAWING IS THE SOLE PROPERTY OF
MENCOM CORPORATION. ANY
REPRODUCTION IN PART OR AS A WHOLE
WITHOUT THE WRITTEN PERMISSION OF
MENCOM CORPORATION IS
PROHIBITED.

UNLESS OTHERWISE SPECIFIED:

DIMENSIONS ARE IN INCHES
AND [MM]

MATERIAL

FINISH

DO NOT SCALE DRAWING

HOUSING MATERIALS	
BODY:	EPOXY COATED DIE CAST ALUMINUM
HANDLE:	POLYAMIDE
LEVERS:	STAINLESS STEEL
APPROVALS	
US	UL RECOGNIZED
CANADA	C-UL RECOGNIZED

NAME		MENCOM CORPORATION	
DRAWN	JJH	TITLE:	
CHECKED			
ENG APPR.			
MFG APPR.			
Q.A.			
COMMENTS:		SIZE	DWG. NO.
		B	CHO-10X
		SCALE: 1:1	WEIGHT:
		SHEET 1 OF 1	

8 7 6 5 4 3 2 1