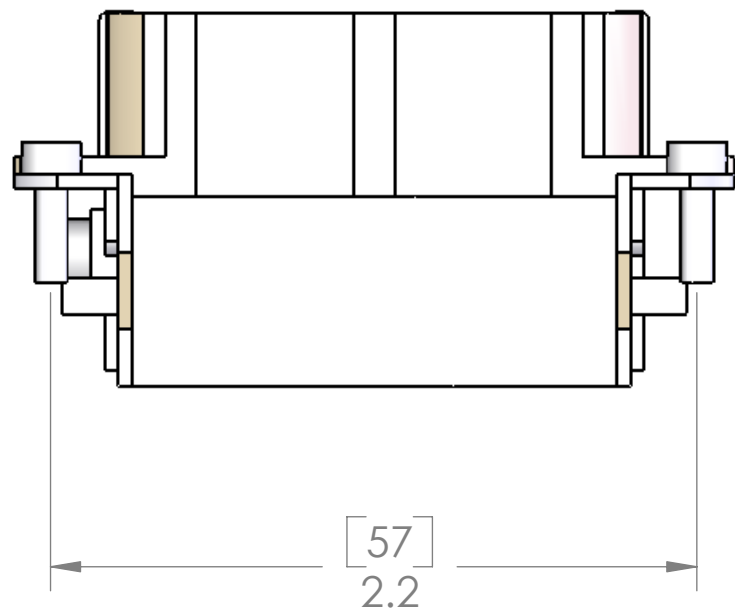
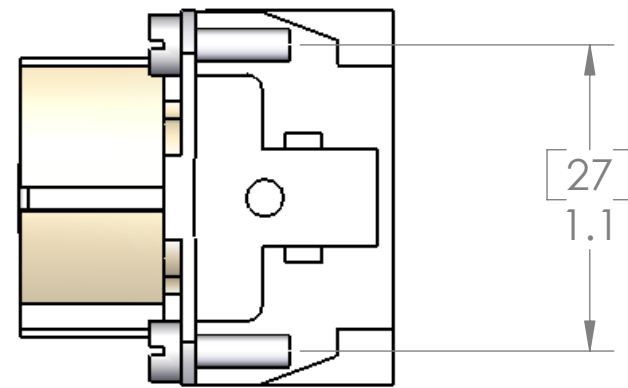
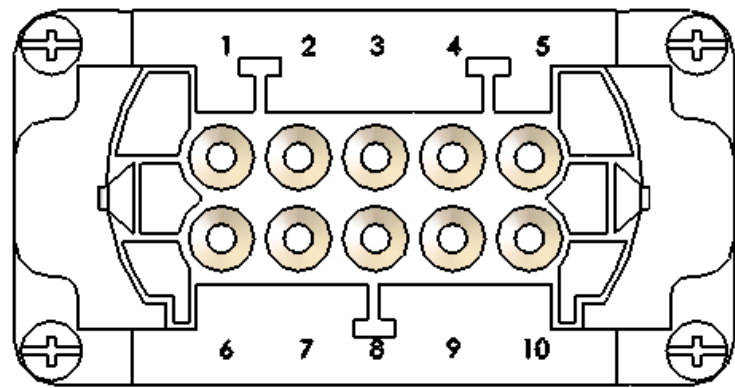


8 7 6 5 4 3 2 1

REVISIONS			
REV.	DESCRIPTION	DATE	APPROVED
A	REDRAWN IN SW	7/26/2006	



USE WITH ILME CRIMP CONTACTS: CCFA-X.X

MATERIALS	
HOUSING:	GLASS REINFORCED THERMOPLASTIC
SCREWS:	NICKEL PLATED BRASS HARDWARE
	NICKEL PLATED BRASS
RATINGS:	UL - 600V, 16A. EN 500V/6kV/3, 16A
APPROVALS:	UL & CSA

**PROPRIETARY AND CONFIDENTIAL**  
 THE INFORMATION CONTAINED IN THIS DRAWING IS THE SOLE PROPERTY OF MENCOM CORPORATION. ANY REPRODUCTION IN PART OR AS A WHOLE WITHOUT THE WRITTEN PERMISSION OF MENCOM CORPORATION IS PROHIBITED.

	UNLESS OTHERWISE SPECIFIED:		NAME
	DIMENSIONS ARE IN INCHES AND [MM]	DRAWN	DWM
		CHECKED	
		ENG APPR.	
		MFG APPR.	
		Q.A.	
		COMMENTS:	
	MATERIAL		
	FINISH		
	DO NOT SCALE DRAWING		

MENCOM CORPORATION

TITLE:  
 10 POLE FEMALE CRIMP INSERT 16A

SIZE	DWG. NO.	REV
<b>B</b>	CCEF-10	<b>A</b>
SCALE: 3:2	WEIGHT:	SHEET 1 OF 1

8 7 6 5 4 3 2 1