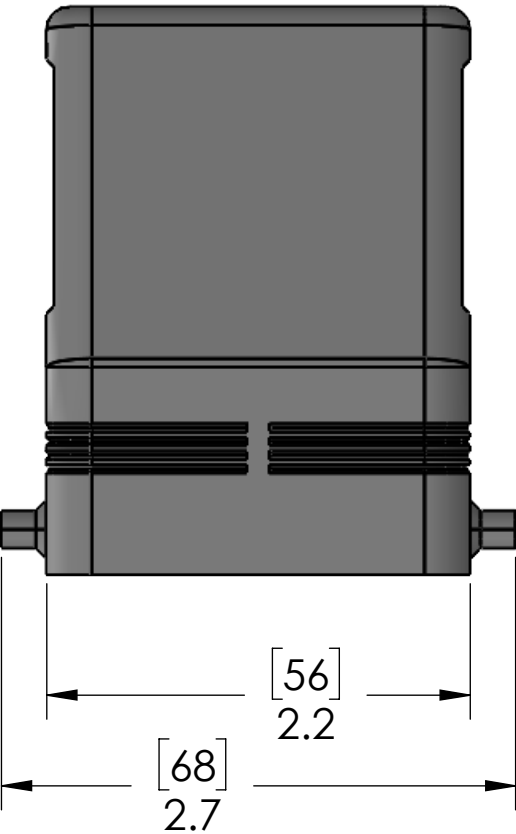
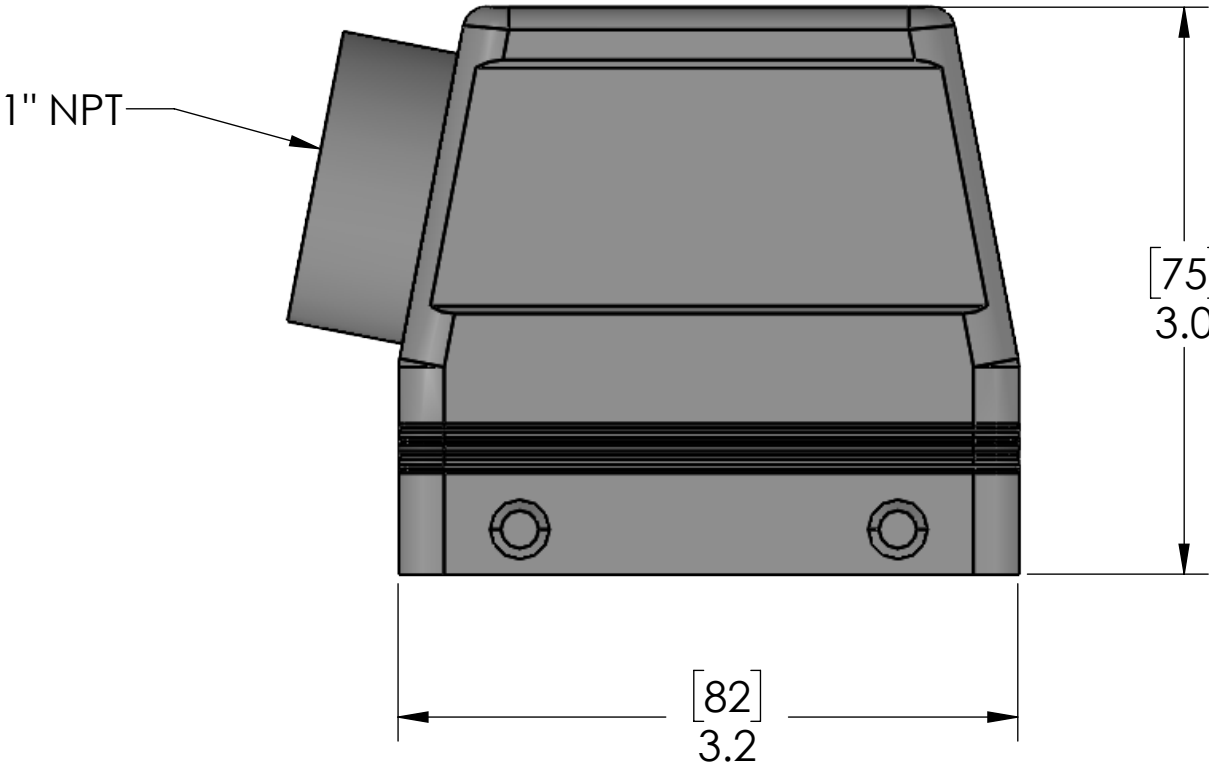


Revisions			
REV.	DESCRIPTION	DATE	DRAWN BY
A	RELEASED	10/26/2021	DCG



HOUSING MATERIALS	
BODY:	EPOXY COATED DIE CAST ALUMINUM

UNLESS OTHERWISE SPECIFIED:  DIMENSIONS ARE IN INCHES TOLERANCES: FRACTIONAL ±1/64 ANGULAR: MACH ±5° BEND ±5° TWO PLACE DECIMAL ±.01 THREE PLACE DECIMAL ±.004	DRAWN BY	DCG
	DRAWN DATE	10/26/2021
	CHECKED BY	APR
	CHECK DATE	10/26/2021
	COMMENTS:	
MATERIAL		
FINISH		
DO NOT SCALE DRAWING		

MENCOM CORPORATION		
TITLE: 50 PL HC SE HD 4 PGS 1"NPT		
SIZE <b>B</b>	DWG. NO. CAOT-50.6	REV <b>A</b>
SCALE: 1:1	WEIGHT:	SHEET 1 OF 1

**PROPRIETARY AND CONFIDENTIAL**  
THE INFORMATION CONTAINED IN THIS DRAWING IS THE SOLE PROPERTY OF MENCOM CORPORATION. ANY REPRODUCTION IN PART OR AS A WHOLE WITHOUT THE WRITTEN PERMISSION OF MENCOM CORPORATION IS PROHIBITED.

SEAL RATING OF IP66 (and IP69 DIN 40050 - 9)  
ONLY ACHIEVED WHEN FULLY  
LATCHED TO MATING BASE AND WITH AN  
APPROPRIATE SEALING GLAND INSTALLED