

MIXO modular units

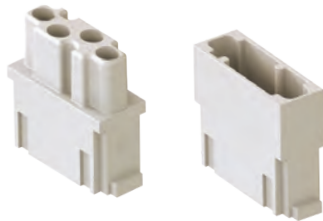
for 4 coaxial contacts DIN 41626-T2

The modular inserts must be installed in suitable frames which are then mounted in traditional enclosures or in COB panel support.
Single-sized modular units may be directly mounted inside MIXO ONE enclosures.

frames for modular units page: 316 - 317

MIXO ONE enclosures 369

modular units,
crimp connections





crimp coaxial contacts



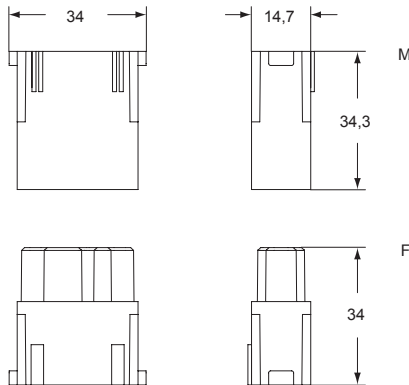
description	part No.	part No.
-------------	----------	----------

without contacts (to be ordered separately)		
female inserts for female contacts	CX 04 RF	
male inserts for male contacts	CX 04 RM	
female coaxial contacts 50Ω		CX 50 RF
male coaxial contacts 50Ω		CX 50 RM
female coaxial contacts 75Ω		CX 75 RF
male coaxial contacts 75Ω		CX 75 RM

- characteristics according to EN 61984:
1,5A 50V 0,8kV 3
-   certified
- insulation resistance: $\geq 5\text{ G}\Omega$
- temperature range: $-40\text{ }^{\circ}\text{C} \dots +125\text{ }^{\circ}\text{C}$
- inserts are made of self-extinguishing thermoplastic resin UL 94V-0
- mechanical life: ≥ 500 cycles
- in accordance with standard DIN 41626-T2
- finishing:
contact surfaces, body, back end and ferrule gold plated
- impedance: $50\text{ }\Omega$
- frequency: DC to 6 GHz
- return loss: $\geq 21\text{ dB}$, DC to 2 GHz
 $\geq 19\text{ dB}$, 2 to 6 GHz
- insertion loss: $\leq 0,1 \times \sqrt{f(\text{GHz})}\text{ dB}$
- center contact resistance: $\leq 10\text{ m}\Omega$
- outer contact resistance: $\leq 3\text{ m}\Omega$
- test voltage: 750V rms
- working voltage: 250V rms
- RF-leakage: $\geq 80\text{ dB}$ up to 0,5 GHz
 $\geq 65\text{ dB}$ up to 1,5 GHz
- to crimp contacts CX 50 RM/RF, CX 75 RM/RF use tool COPZ R (see the crimping tool section on page 734)

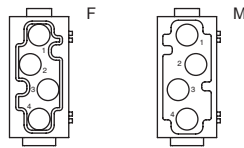
Warnings:
We recommend the use of code pins
CRF CX / CRM CX.

CX 04 RF / RM

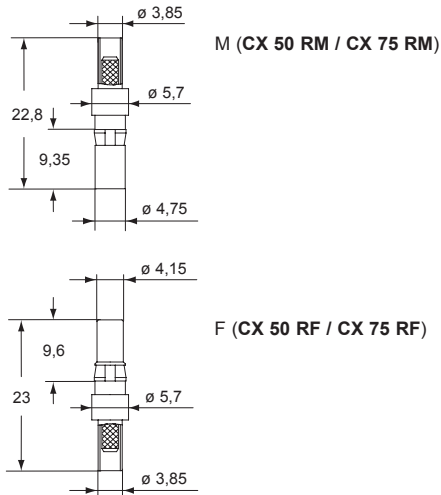


contacts side (front view)

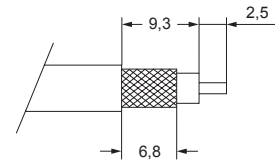
side with reference arrow ▲



- 1 frame slot



conductor stripping



coaxial contacts	for cables	ø external	part No.
50Ω	RG 316/U	2,49 $\pm 0,1$	CX 50 RF
	RG 174/U	2,79 $\pm 0,127$	CX 50 RM
	RG 188 A/U	2,79 max	
75Ω	RG 179 B/U	2,54 $\pm 0,127$	CX 75 RF
	RG 187 A/U	2,79 max	CX 75 RM
	TZC 75 101	2,79 max	