

“Stay Connected” with



HEYware Products

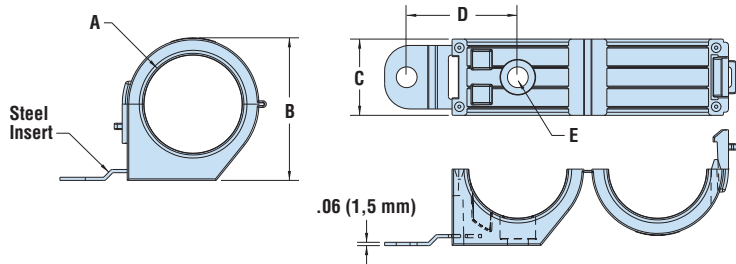
a PennEngineering® Company



- Available in three different sizes to accommodate a variety of cables ranging from 1.5” to 3” in diameter.
- Unique design allows for installation of Heavy Duty Lockit P Clamps to be independent of cable installation.
- Release feature allows for serviceability or field maintenance.
- Inner diameter ribs offer some axial retention.
- Steel mounting tab provides reliable, long-lasting hold in harsh environments.
- Steel Tab Accepts maximum screw size of 3/8”.
- Extra mounting hole inside of clamp provides anti-rotational benefit.
- Anti-rotation hole accepts maximum screw size of 3/8”, except for HDLCC 2000, which accepts 5/16”.

## Heyco® Heavy Duty Lockit P Clamps Steel Mounting Tab

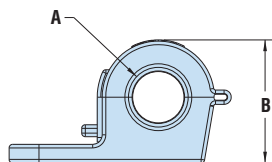
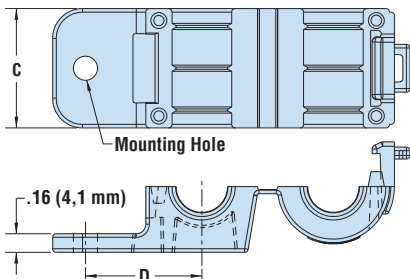
MOUNTING HOLE DIA.		MAX BUNDLE DIA. A		PART NO.		DESCRIPTION	PART DIMENSIONS							
in.	mm.	in.	mm.	Black Zinc Plated Steel Insert	Black 304 SS Insert		Overall Height B		Overall Width C		Mounting Center to Center D		Counterbore Dia. E	
0.41	10,4	1.5	38,1	15474B	25474B	HDLCC 1500-410	2.3	57,4	1.5	38,1	1.90	48,3	0.82	20,8
		2.0	50,8	15478B	25478B	HDLCC 2000-410	2.8	71,6			2.19	55,6	0.70	17,8
		3.0	76,2	15482B	25482B	HDLCC 3000-410	3.8	97,3			2.68	68,1	0.82	20,8



- Available in multiple sizes to accommodate a variety of cables ranging from .38” to 1” in diameter.
- Unique design allows for installation of Heavy Duty Lockit P Clamps to be independent of cable installation.
- Release feature allows for serviceability or field maintenance.
- Inner diameter ribs offer some axial retention.

## Heyco® Heavy Duty Nylon Lockit P Clamps

MOUNTING HOLE DIA.		MAX BUNDLE DIA. A		PART NO.			DESCRIPTION	PART DIMENSIONS					
in.	mm.	in.	mm.	Black All Nylon 6/6	Black All Nylon 6/6 V-0 Rated	Gray All Nylon 6/6		Overall Height B		Width C		Mounting Hole Center to Cable Dia. Center	
0.20	5,1	0.38	9,7	15450B	15450F	15425	HDLCC 375-201	0.9	23,6	1.00	25,4	0.87	22,1
0.27	6,9			15451B	15451F	15426	HDLCC 375-265						
0.20	5,1	0.50	12,7	15454B	15454F	15428	HDLCC 500-201	1.1	26,9	1.00	25,4	0.98	25,0
0.27	6,9			15455B	15455F	15430	HDLCC 500-265						
0.20	5,1	0.63	16,0	15458B	15458F	15432	HDLCC 625-201	1.2	29,7	1.00	25,4	1.04	26,4
0.27	6,9			15459B	15459F	15433	HDLCC 625-265						
0.27	6,9	0.75	19,1	15462B	15462F	15436	HDLCC 750-265	1.3	33,0	1.00	25,4	1.21	30,7
0.33	8,4			15463B	15463F	15437	HDLCC 750-330						
0.27	6,9	0.88	22,4	15466B	15466F	15439	HDLCC 875-265	1.4	35,8	1.25	31,8	1.27	32,3
0.33	8,4			15467B	15467F	15440	HDLCC 875-330						
0.27	6,9	1.00	25,4	15470B	15470F	15445	HDLCC 1000-265	1.5	39,1	1.00	25,4	1.36	34,5
0.33	8,4			15471B	15471F	15446	HDLCC 1000-330						



Material	Nylon 6/6 Steel Insert – Zinc Plated Stainless Steel Insert – 304 Stainless Steel
Flammability Rating	UL 94V2
Temperature Range	32°F (0°C) to 221°F (105°C)