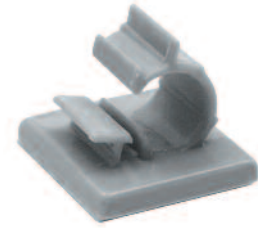


“Stay Connected” with



HEYware Products

a PennEngineering® Company

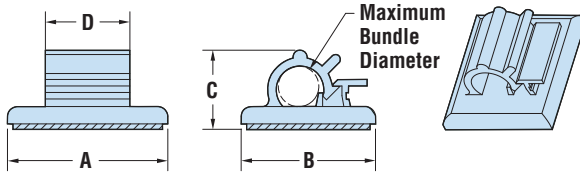


HEYClip™ Locking Releasable Wire Clips - Adhesive-Back Mount

| MAXIMUM BUNDLE DIAMETER | PART NO. | | | | | | | DESCRIPTION | FOOTPRINT | | OVERALL HEIGHT C | | CLAMP WIDTH D | |
|-------------------------|----------|------|---------|-------|-------|--------|--------|---------------|-------------|-------------|------------------|------|---------------|------|
| | Rubber | | Acrylic | | VHB | | A x B | | in. | mm. | in. | mm. | | |
| | Black | Gray | Black | Gray | Black | Gray | in. | | | | | | mm. | |
| .19 | 4,8 | 3917 | 3857 | 3917A | 3857A | 3917V* | 3857V* | WCA 187-500 | .74 x .62 | 18,8 x 15,7 | .34 | 8,6 | .39 | 9,9 |
| .25 | 6,4 | 3918 | 3858 | 3918A | 3858A | 3918V* | 3858V* | WCA 250-750 | 1.00 x .87 | 25,4 x 22,1 | .42 | 10,7 | .63 | 16,0 |
| .38 | 9,6 | 3919 | 3859 | 3919A | 3859A | 3919V* | 3859V* | WCA 375-1000 | 1.00 x 1.00 | 25,4 x 25,4 | .50 | 12,7 | | |
| .50 | 12,7 | 3920 | 3860 | 3920A | 3860A | 3920V* | 3860V* | WCA 500-1250 | 1.00 x 1.21 | 25,4 x 30,7 | .68 | 17,3 | .64 | 16,3 |
| .75 | 19,1 | 3921 | 3861 | 3921A | 3861A | 3921V* | 3861V* | WCA 750-1750 | 1.15 x 1.45 | 29,2 x 36,8 | .99 | 25,1 | | |
| 1.00 | 25,4 | 3923 | 3867 | 3923A | 3867A | 3923V* | 3867V* | WCA 1000-4000 | 1.98 x 2.24 | 50,3 x 56,9 | 1.37 | 34,8 | 1.26 | 32,0 |
| 1.50 | 38,1 | 3930 | 3868 | 3930A | 3868A | 3930V* | 3868V* | WCA 1500-6000 | 2.42 x 2.95 | 61,5 x 74,9 | 1.77 | 45,0 | 1.31 | 33,3 |

Standard color gray or black.

*Tensile strength for VHB series is greater than wire retention of the clip.



- Releasable and reusable clips for easy wire bundle routing.
- Quick and easy installation - simply peel off backing and press into place.
- Seven sizes for bundles from .187" (4,7mm) to 1.500" (38,1mm) in diameter
- Clips without suffix have a load rating of 1 pound per square inch
- Clips with suffix "A" have a load rating of 6 pounds per square inch
- Clips with suffix "V" have a load rating of 105 pounds per square inch



HEYClip™ Locking Releasable Wire Clips - Adjustable

| MAXIMUM BUNDLE DIAMETER RANGE A | | | | PART NO. | DESCRIPTION | OVERALL HEIGHT D * | | FOOTPRINT B x C | |
|---------------------------------|------|---------|------|----------|-------------|--------------------|------|-----------------|-------------|
| Minimum | | Maximum | | | | in. | mm. | in. | mm. |
| in. | mm. | in. | mm. | | | | | | |
| WCLP Series - Arrowhead Mount | | | | | | | | | |
| .47 | 11,9 | .55 | 14,0 | 4335 | WCLP 562 | 1.17 | 29,8 | .50 x 1.24 | 12,7 x 31,5 |
| .58 | 14,7 | .75 | 19,1 | 4336 | WCLP 750 | 1.36 | 34,5 | .50 x 1.48 | 12,7 x 37,6 |
| WCLA Series - Adhesive Mount** | | | | | | | | | |
| .22 | 5,5 | .26 | 6,5 | 4323 | WCLA 258 | .74 | 18,8 | .65 x .85 | 16,5 x 21,6 |
| .31 | 7,9 | .41 | 10,3 | 4324 | WCLA 406 | .90 | 22,8 | .75 x 1.00 | 19,1 x 25,4 |
| .47 | 11,9 | .56 | 14,3 | 4325 | WCLA 562 | 1.12 | 28,5 | .75 x 1.24 | 19,1 x 31,5 |
| .58 | 14,7 | .75 | 19,1 | 4326 | WCLA 750 | 1.32 | 33,6 | .75 x 1.50 | 19,1 x 38,1 |
| .87 | 22,2 | 1.00 | 25,4 | 4327 | WCLA 1000 | 1.78 | 45,3 | 1.00 x 1.97 | 25,4 x 50,1 |

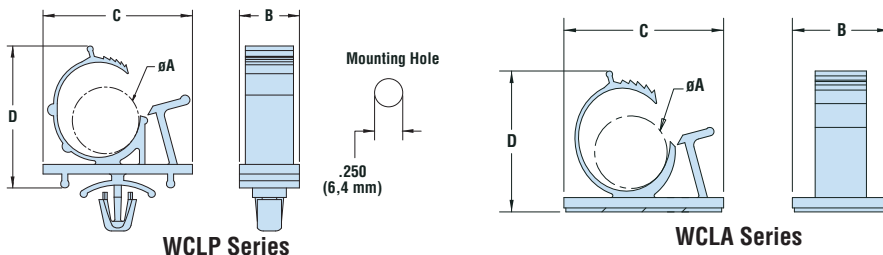
WCLP Series - Arrowhead Mount

| | | | | | | | | | |
|-----|------|-----|------|------|----------|------|------|------------|-------------|
| .47 | 11,9 | .55 | 14,0 | 4335 | WCLP 562 | 1.17 | 29,8 | .50 x 1.24 | 12,7 x 31,5 |
| .58 | 14,7 | .75 | 19,1 | 4336 | WCLP 750 | 1.36 | 34,5 | .50 x 1.48 | 12,7 x 37,6 |

WCLA Series - Adhesive Mount**

| | | | | | | | | | |
|-----|------|------|------|------|-----------|------|------|-------------|-------------|
| .22 | 5,5 | .26 | 6,5 | 4323 | WCLA 258 | .74 | 18,8 | .65 x .85 | 16,5 x 21,6 |
| .31 | 7,9 | .41 | 10,3 | 4324 | WCLA 406 | .90 | 22,8 | .75 x 1.00 | 19,1 x 25,4 |
| .47 | 11,9 | .56 | 14,3 | 4325 | WCLA 562 | 1.12 | 28,5 | .75 x 1.24 | 19,1 x 31,5 |
| .58 | 14,7 | .75 | 19,1 | 4326 | WCLA 750 | 1.32 | 33,6 | .75 x 1.50 | 19,1 x 38,1 |
| .87 | 22,2 | 1.00 | 25,4 | 4327 | WCLA 1000 | 1.78 | 45,3 | 1.00 x 1.97 | 25,4 x 50,1 |

Standard color natural. *At maximum wire capacity. **Adhesive-Back is rubber adhesive only – 1/16" (1,6 mm) thick.



WCLP Series:

- Gather and route wires.
- Adjust to diameter needed to bundle.
- Push mount design allows for fast installation.

WCLA Series:

- Lock securely and easily. Re-open for routing changes.
- Ratcheting clip holds bundle securely in place.
- Good for high vibration applications. Once closed the clip will not open until tab is released.

| | |
|---------------------|-------------------------------|
| Material | Nylon 6/6 |
| Flammability Rating | 94V-2 |
| Temperature Range | -40°F (-40°C) to 185°F (85°C) |

Adhesive Temperature Ranges***

| | |
|------------------|-------------------------------|
| Rubber Adhesive | 50°F (10°C) to 155°F (68°C) |
| Acrylic Adhesive | 10°F (-12°C) to 180°F (82°C) |
| VHB Adhesive | -40°F (-40°C) to 194°F (90°C) |

***Low temperature reflects minimum application temperature for adhesives